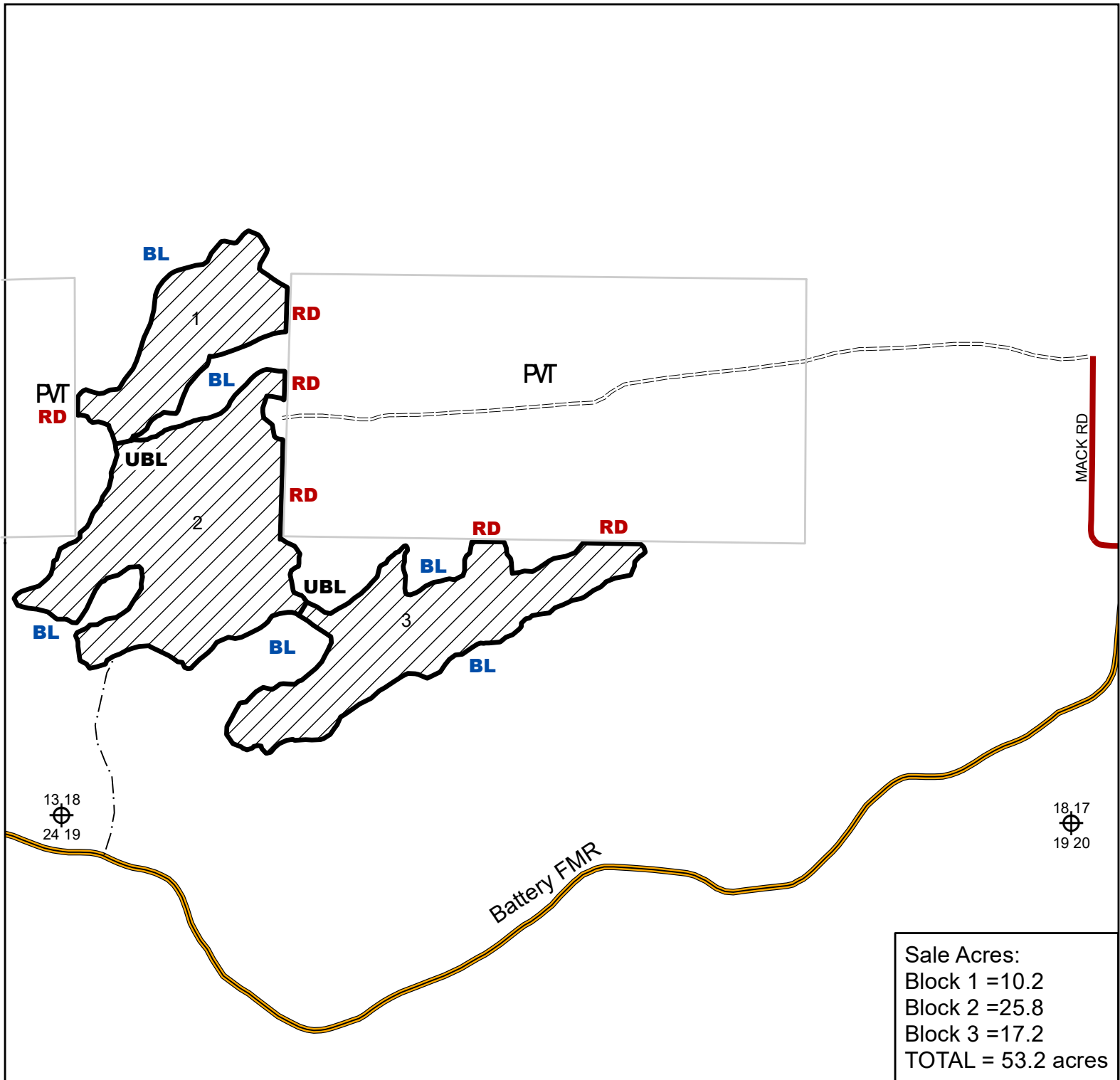


# St. Louis County

## F24-511818



Sale Acres:  
Block 1 =10.2  
Block 2 =25.8  
Block 3 =17.2  
TOTAL = 53.2 acres

Prepared By: Dan Preiner


Map Created: 11/27/2023

TRS: 51-18 sec18

#### Disclaimer:

This is a compilation of records as they appear in the Saint Louis County Offices affecting the area shown. This drawing is to be used only for reference purposes and the County is not responsible for any inaccuracies herein contained.



**RD** -HARVEST AREA CLEARCUT -CCT-  
**BL**  BOUNDARIES PAINTED RED (**RD**),  
& BLUE (**BL**)

==== Existing Seasonal Rd

--- Proposed Accessed

 Section Corner

**UBL** Unpainted Block Line

Reserve All: Balsam, Spruce, Pine, and Snags.

