



**S A I N T  
LOUIS  
COUNTY**  
MINNESOTA

# Land and Minerals Department

**Sealed Bid Timber Auction  
February 26, 2026 9:30 a.m.**



**Notice: Submitted bid forms must be received at the  
Land and Minerals Pike Lake office by 4:00 pm. on  
February 25th, 2026.**

Photo Credit: Anna Nixon

Government Services Center  
320 West 2nd Street, Suite 302  
Duluth, MN 55802  
218-726-2606

Pike Lake Area Office  
5713 Old Miller Trunk Hwy  
Duluth, MN 55803  
218-625-3700

Virginia Area Office  
7820 Highway 135  
Virginia, MN 55792  
218-742-9898

**[stlouiscountymn.gov](http://stlouiscountymn.gov)**



## NOTICE OF ST. LOUIS COUNTY SEALED BID PUBLIC TIMBER AUCTION

Notice is hereby given that the St. Louis County Auditor shall sell to the highest bidder the designated timber located on the following described parcels of land forfeited to the state for the nonpayment of taxes, which have been classified and appraised as provided by Minnesota Statutes 282.04, Subd. 1(a); and that this auction may include other lands which the St. Louis County Land and Minerals Department is authorized to manage, subject, in part, to the following conditions:

1. To be eligible to bid at a St. Louis County Timber auction, a Responsible Operator Application Form must be on file at any of our Land and Minerals Department offices at least **2 (two) working days prior** to the auction. An application can be obtained at any Land and Minerals Department Office.
2. The timber will be sold to the highest bidder but for not less than the total appraised **Tract Value**. A monetary bid value per unit must be indicated for each species listed. This bid value will be applied to each species. Bid value per unit must meet or exceed the appraised bid value per unit. St. Louis County reserves the right to accept or reject any or all bids.
3. All bid forms must be received, in hand at the Land and Minerals Department Pike Lake Area office **by 4:00 P.M. on February 25th**. All bids must be on the official bid form. It is the full responsibility of the bidder to make sure the bid arrives at the Pike Lake office by the deadline.
4. A \$300 bid bond, i.e. personal check, payable to the **St. Louis County Auditor** is required and must be included with the bid form. One bid bond will cover all tract bids and will be returned if the bids are not the successful bidder. For a successful bidder, the bid bond will be applied to the down payment on the first tract awarded.
5. Successful bidders will have **10 business days** to submit a check, payable to the County Auditor, for **15%** of the appraised tract value for each tract awarded. Failure to make any or all of these down payments on time will result in the forfeiture of the bid bond. Successful bidders will be notified by mail.
6. Should the successful bidder not submit the down payment on time, the sale may be awarded to the next highest bidder. In the case of tie bids, the successful bidder will be decided by the toss of a coin by a deputy auditor.

**St. Louis County Land and Minerals Department does not accept cash payments.**

**Payment must be made by Check or Money Order.**

**Checks must be Payable to the St. Louis County Auditor.**

Sale will be held at:

St. Louis County Land and Minerals Department

Pike Lake Area Office

5713 Old Miller Trunk Highway

Duluth, MN 55811

9:30 A.M.—February 26, 2026

**STLOUISCOUNTYMN.GOV**

<p>Pike Lake Area Josh Carlson, Area Land Manager 5713 Old Miller Trunk Highway Duluth, MN 55811</p> <p>218-625-3700</p>	<p>Virginia Area Dave Skurla, Area Land Manager 7820 Highway 135 Virginia, MN 55792</p> <p>218-742-9898</p>
--	---

## **Please Note:**

Forest products offered are certified to the Sustainable Forestry Initiative (SFI®) Standard according to the Land and Minerals Department's SFI® certificate unless otherwise indicated in the "Comments" section for the tract and corresponding contract document.

Many of the tracts have special requirements. The St. Louis County Land and Minerals Department offers sales of various sizes, species, and products to meet the needs of a wide variety of purchasers.

There are some sales offered on this auction that allow the purchaser to decide if they want to purchase the sale as offered, or choose to have all the species sold as SOAV. These are identified with the following sentence in the comments of each tract: "The purchaser has the option to purchase this sale as advertised or to purchase all species as Sold On Appraised Volume (SOAV)". SOAV species are intended to include the entire above ground portion of the tree, including residuals and may be removed at the discretion of the contractor, unless otherwise specified. Roundwood measure is shown for bidding purposes only, and does not include any estimate of residuals. SOAV species are to be sold based on the appraisal without scaling.

Producing biomass from merchantable roundwood of scaled species may be allowed if consumer scaling requirements are met. Please contact the Sale Administrator for more information on this process.

Timber products are sold by species. Purchasers are encouraged to evaluate sales to determine the specific products available from the sold species.

**If there is any conflict between the Timber Sale Package and this advertisement, the Timber Sale Package is the controlling document.** The Timber Sale Package contains maps, volume and values, contract information and harvest provisions, and is available at the applicable AREA OFFICE listed on the previous page or on the county website:

**STLOUISCOUNTYMN.GOV**

For contracts offering the option of choosing Sold On Appraised Volume (SOAV), successful bidders must elect to choose this option when paying the down payment pursuant to Minnesota Statute 90.14.

Successful bidders using a Letter of Credit to secure the purchase of a sale will have ten (10) business days to provide the Letter of Credit to the Land and Minerals Department. A \$300 bid bond, i.e. personal check, payable to the St. Louis County Auditor is required and must be paid the day of the auction. One bid bond will cover all purchased tracts that will be secured by Letter of Credit.

Optional Products are products that can be purchased prior to the entire sale payment or when a block payment is to be made. These products will not be included into the 15% downpayment of the appraised value and will not be factored into the bid value. Optional products advertised will be noted in the Sales Comments and will be listed separately under the species volume/value information.

---

Timber Sale Operators must have the following minimum training for at least the owner of the firm and the foreman who will supervise the logging on St. Louis County Tax Managed Lands:

- Master Logger Certification; or
- Minnesota Logger Education (MLEP) Member in Good Standing; or SFI Training FISTA member; or
- Training equivalent to the Minnesota SFI Implementation Committee Training Standard for a trained Professional Logger.

All field employees must have training in best management practices.

**Published as follows is the list of timber to be offered at public auction sale as announced and advertised in the official newspaper within this county.**



# St. Louis County February 26, 2026 Timber Auction

Tract #: 1

C26-641711

Sale Administrator: Christopher Lintula

Virginia Area

Total Appraised: \$27,682.50

Twp. 64N Rge. 17W Sec. 10, 11

C19260001

Down Payment Required: \$4,152.38

Expires: 4/15/2029

48° 2.27' N 092° 28.848' W

Total Acres: 54.7

Blocks: 1

Species	Sticks	Dia.
Aspen	4.5	9.0
Balsam Fir	3.1	7.0
Pine-Jack	5.1	9.6
Pine-Norway	6.6	15.9
Birch	2.5	6.7
Spruce-White	4.4	9.7

**Comments:**

There is an outbreak of Spruce budworm infecting balsam fir on this sale. Only currently live trees were cruised.

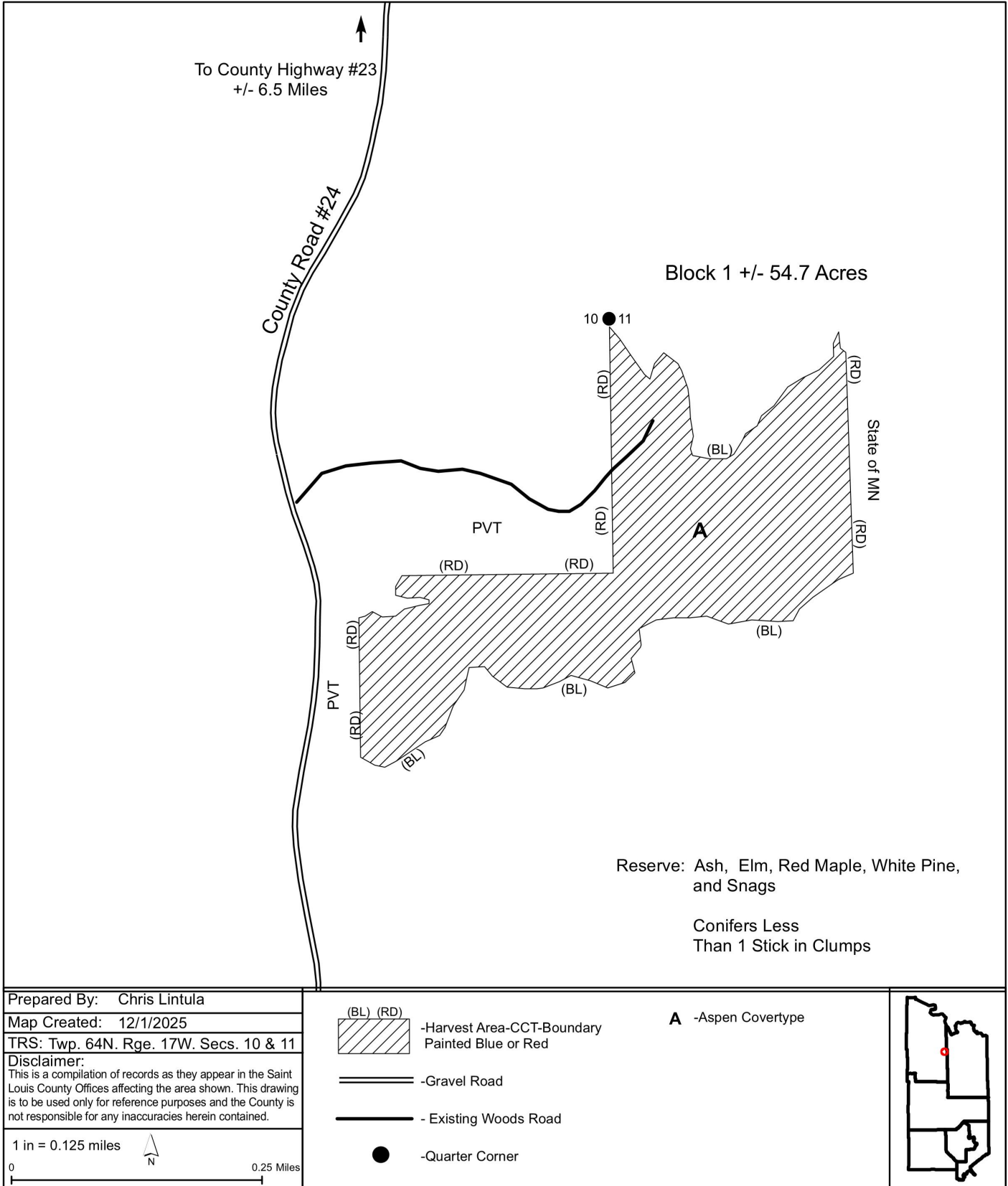
Block	Operational Periods
1	Dry soil after July 1 or Frozen Ground

Products	No Bid	Total Volume	Appraised Value	Total Value
<b>Total for Blocks 1</b>				
Aspen		771 Cords @	\$28.01 =	\$21,595.71
Balsam Fir		158 Cords @	\$7.54 =	\$1,191.32
Birch		37 Cords @	\$7.01 =	\$259.37
Pine-Jack		164 Cords @	\$16.01 =	\$2,625.64
Pine-Norway		51 Cords @	\$31.46 =	\$1,604.46
Spruce-White		29 Cords @	\$14.00 =	\$406.00
<b>Total Appraised Value:</b>				<b>\$27,682.50</b>



C19260001

St. Louis County  
C26-641711





# St. Louis County February 26, 2026 Timber Auction

Tract #: 2

C26-651908

Sale Administrator: Casey Anderson

Virginia Area

Total Appraised: \$19,067.02

Twp. 65N Rge. 19W Sec. 8

C19260002

Down Payment Required: \$2,860.05

Total Acres: 27.8

Expires: 4/15/2029

48° 7.865' N 092° 48.925' W

Blocks: 1

Species	Sticks	Dia.
Pine-Norway	5.5	14.3
Birch	3.2	9.2
Aspen	5.1	11.9
Balsam Fir	2.9	8.3
Maple-Red	2.5	8.9
Pine-Jack	5.5	12.5

## Comments:

There is an outbreak of Spruce budworm infecting Balsam fir and White spruce species on this sale. Only currently live trees were cruised.

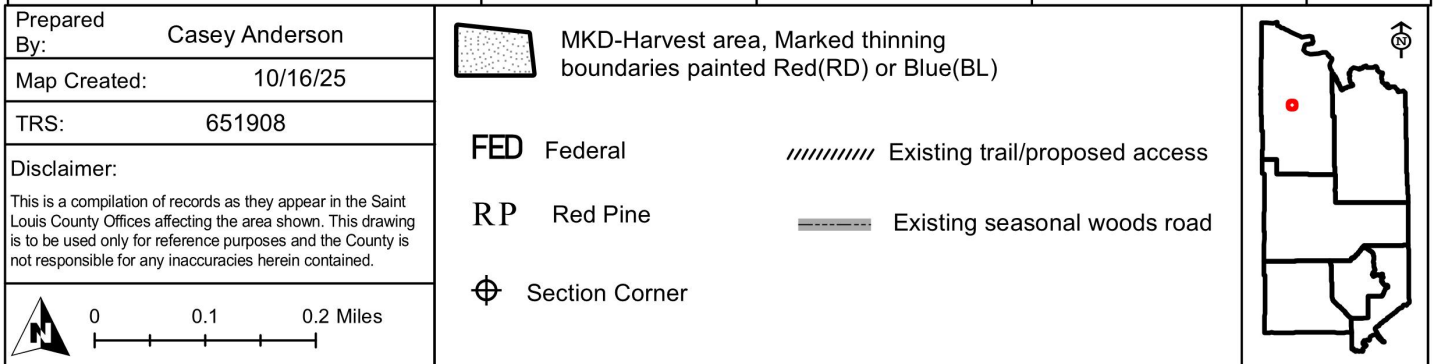
The purchaser will be required to secure a Road Use Permit from the USFS LaCroix Ranger District in Cook, MN. The Road Use Permit will involve road toll fees or a maintenance agreement including placing a berm on the 604D- Mud Lake Spur D Road.

Block	Operational Periods
1	Dry soil from September 1 to April 30, operation period may be adjusted with permission, see harvest provisions

Products	No Bid	Total Volume	Appraised Value	Total Value
<b>Total for Blocks 1</b>				
Aspen		84 Cords @	\$30.81 =	\$2,588.04
Balsam Fir		49 Cords @	\$8.29 =	\$406.21
Birch		87 Cords @	\$7.72 =	\$671.64
Maple-Red		32 Cords @	\$5.75 =	\$184.00
Pine-Jack		12 Cords @	\$17.61 =	\$211.32
Pine-Norway		431 Cords @	\$34.60 =	\$14,912.60
Spruce-Black		3 Cords @	\$15.67 =	\$47.01
Spruce-White		3 Cords @	\$15.40 =	\$46.20
<b>Total Appraised Value:</b>				<b>\$19,067.02</b>



**St. Louis County**  
***C26-651908***





# St. Louis County February 26, 2026 Timber Auction

Tract #: 3

C26-651911

Sale Administrator: Hayden Pocquette

Virginia Area

Total Appraised: \$26,341.41

Twp. 65N Rge. 19W Sec. 11, 12

C19260003

Down Payment Required: \$3,951.21

Expires: 4/15/2029

48° 7.609' N 092° 44.443' W

Total Acres: 37.8

Blocks: 2

Species	Sticks	Dia.
Pine-Norway	3.6	6.2
Aspen	5.3	7.2
Balsam Fir	2.5	5.6
Maple-Red	2.2	5.9
Ash	4.0	9.0
Birch	4.0	10.2

## Comments:

This sale includes a self-directed thinning. 15-foot-wide skid trails will be cut with 40-foot-wide leave strips. Harvesting and skidding equipment width must not exceed 12 feet.

The purchaser will be required to secure a Road Use Permit from the USFS LaCroix Ranger District in Cook, MN. The Road Use Permit will involve road toll fees or a maintenance agreement.

Block	Operational Periods
1	Dry soil after July 1 or Frozen Ground
2	Dry soil from September 1 to April 30, operation period may be adjusted with permission, see harvest provisions

## Products

No Bid

Total Volume

Appraised Value

Total Value

### Total for Blocks 1, 2

Ash	20 Cords @	\$5.00	=	\$100.00
Aspen	841 Cords @	\$28.01	=	\$23,556.41
Balsam Fir	38 Cords @	\$5.00	=	\$190.00
Birch	12 Cords @	\$5.00	=	\$60.00
Maple-Red	29 Cords @	\$5.00	=	\$145.00
Pine-Norway	453 Cords @	\$5.00	=	\$2,265.00
Spruce-White	5 Cords @	\$5.00	=	\$25.00
Total Appraised Value:				\$26,341.41

Volume Per Block	Block 1	Block 2
Ash pulpwood	20	
Aspen pulpwood	827	14
Balsam Fir pulpwood	23	15
Birch pulpwood	10	2
Maple-Red pulpwood	29	
Pine-Norway pulpwood		453
Spruce-White pulpwood	5	



C19260003

St. Louis County

C26-651911

Harvesting and skidding are restricted to harvest areas designated as Self Directed Thinning or SDT on the map.

Cut 15' wide skid trails with 40' leave strips to be thinned to 120 BA.

First remove all contract species except Red Pine.  
Second remove Red Pine with smaller diameter or poor form (forks, crooks, double tops, sweep, etc.) to meet spacing requirements

Reserve: Block #1 Conifers less than 1 stick in clumps, White Pine, and snags.  
Block #2 Reserve White Pine in the leave strips.

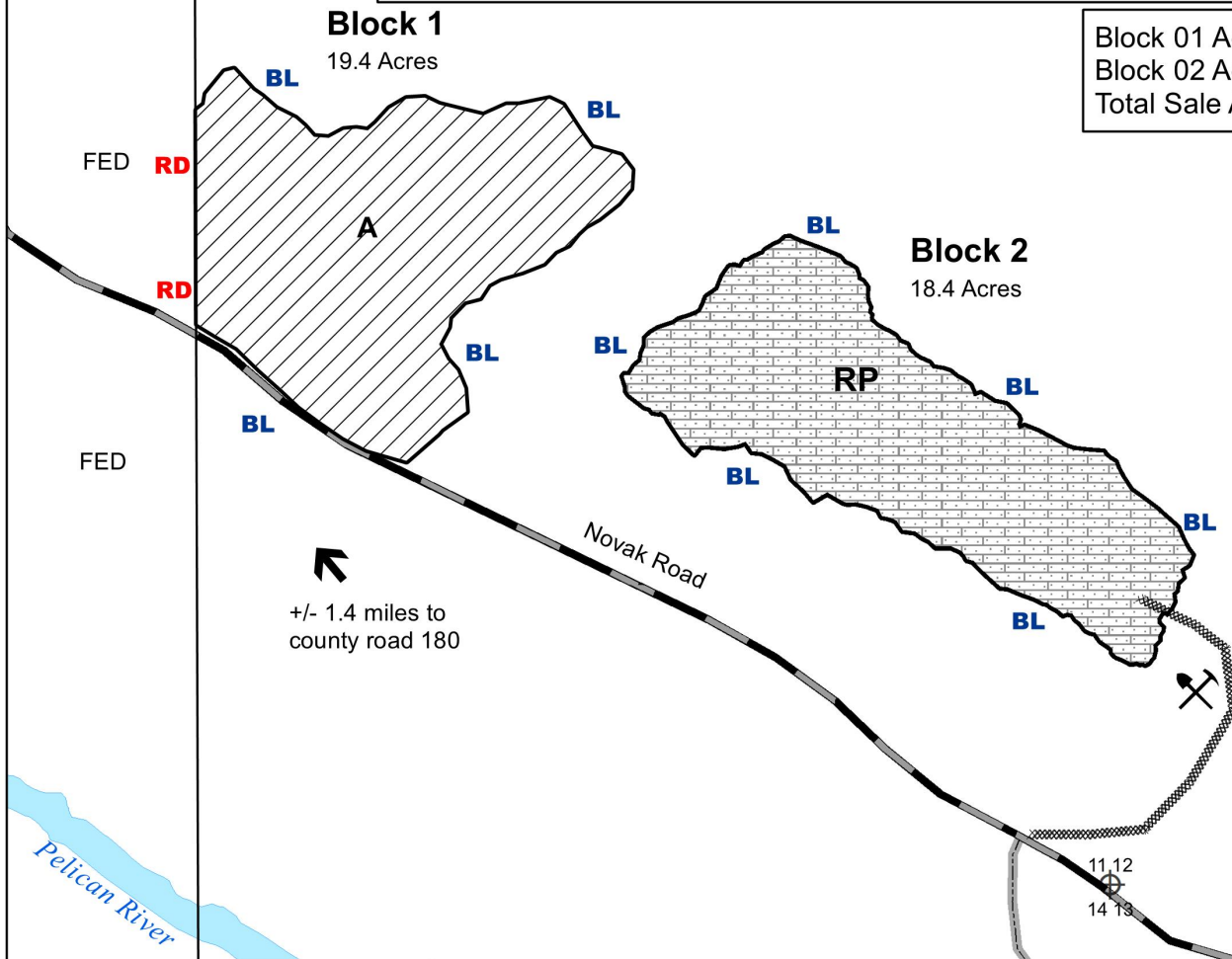
**Block 1**

19.4 Acres

Block 01 Acres: 19.4

Block 02 Acres: 18.4

Total Sale Acres: 37.80



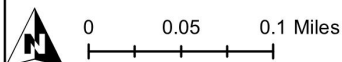
Prepared By: Hayden Pocquette

Map Created: 10/30/2025

TRS: 651911

Disclaimer:

This is a compilation of records as they appear in the Saint Louis County Offices affecting the area shown. This drawing is to be used only for reference purposes and the County is not responsible for any inaccuracies herein contained.



Proposed Access Road - Existing

Harvest Area - SDT/Self Directed Thinning - Boundary Painted Red or Blue

Harvest Area - CCT - Boundary Marked Blue/Red

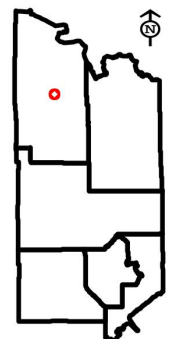
Gravel Pit - Existing

A Aspen

RP Red Pine

Section Corner

FED Federal





# St. Louis County February 26, 2026 Timber Auction

Tract #: 4

C26-652018

Sale Administrator: Casey Anderson

Virginia Area

Total Appraised: \$27,090.31

Twp. 65N Rge. 20W Sec. 18

C19260004

Down Payment Required: \$4,063.55

48° 7.272' N 092° 57.505' W

Total Acres: 35.1

Expires: 4/15/2029

Blocks: 1

Species	Sticks	Dia.
Aspen	4.5	11.0
Maple-Red	2.6	5.3
Maple-Sugar	3.1	9.9
Birch	3.3	7.2
Balsam Fir	3.0	1.9
Balm Of Gilead	4.0	12.7

## Comments:

There is an outbreak of Spruce budworm infecting Balsam Fir and White Spruce species on this sale. Only currently live trees were cruised.

Block	Operational Periods
1	Dry soil after July 1 or Frozen Ground

Products	No Bid	Total Volume	Appraised Value	Total Value
<b>Total for Blocks 1</b>				
Aspen		774 Cords @	\$30.81 =	\$23,846.94
Balm Of Gilead		24 Cords @	\$30.81 =	\$739.44
Balsam Fir		40 Cords @	\$8.29 =	\$331.60
Birch		61 Cords @	\$7.72 =	\$470.92
Maple-Red		112 Cords @	\$6.87 =	\$769.44
Maple-Sugar		111 Cords @	\$6.87 =	\$762.57
Spruce-White		11 Cords @	\$15.40 =	\$169.40
<b>Total Appraised Value:</b>				<b>\$27,090.31</b>



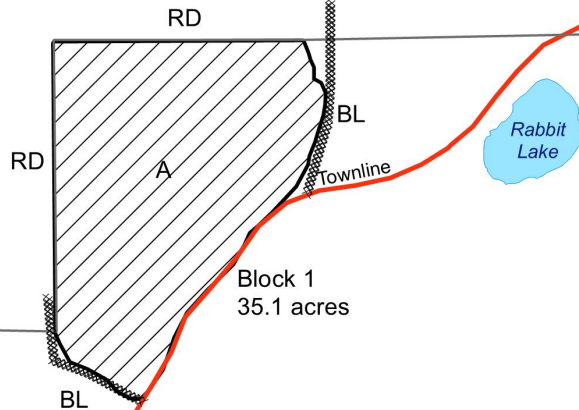
C19260004

St. Louis County

C26-652018

➔ +/- 5.5 miles to hwy 53

State



7 8  
18 17

Sale Acres: 35.1

Reserve all: Ash, White Pine, Red Pine, Basswood.  
Balsam fir, Red maple, and Sugar maple less than one merchantable stick in clumps, Snags

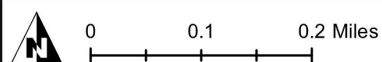
Prepared By: Casey Anderson

Map Created: 10/29/2025

TRS: 652018

Disclaimer:

This is a compilation of records as they appear in the Saint Louis County Offices affecting the area shown. This drawing is to be used only for reference purposes and the County is not responsible for any inaccuracies herein contained.



CCT- Harvest area Clear Cut  
boundaries painted Red(RD) or Blue (BL)



Townline forest road



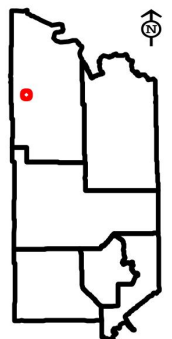
Existing access road



Section Corner



A Aspen





# St. Louis County February 26, 2026 Timber Auction

Tract #: 5

E26-611527

Sale Administrator: Robert Cozzo

Virginia Area

Total Appraised: \$20,019.88

Twp. 61N Rge. 15W Sec. 27

C19260005

Down Payment Required: \$3,002.98

47° 43.78' N 092° 14.242' W

Total Acres: 28.2

Expires: 4/15/2029

Blocks: 1

Species	Sticks	Dia.
Aspen	5.0	9.0
Balsam Fir	2.2	6.7
Birch	2.6	6.3
Maple-Red	1.7	6.3

Block	Operational Periods
1	Dry soil after Road Restrictions or Frozen Ground

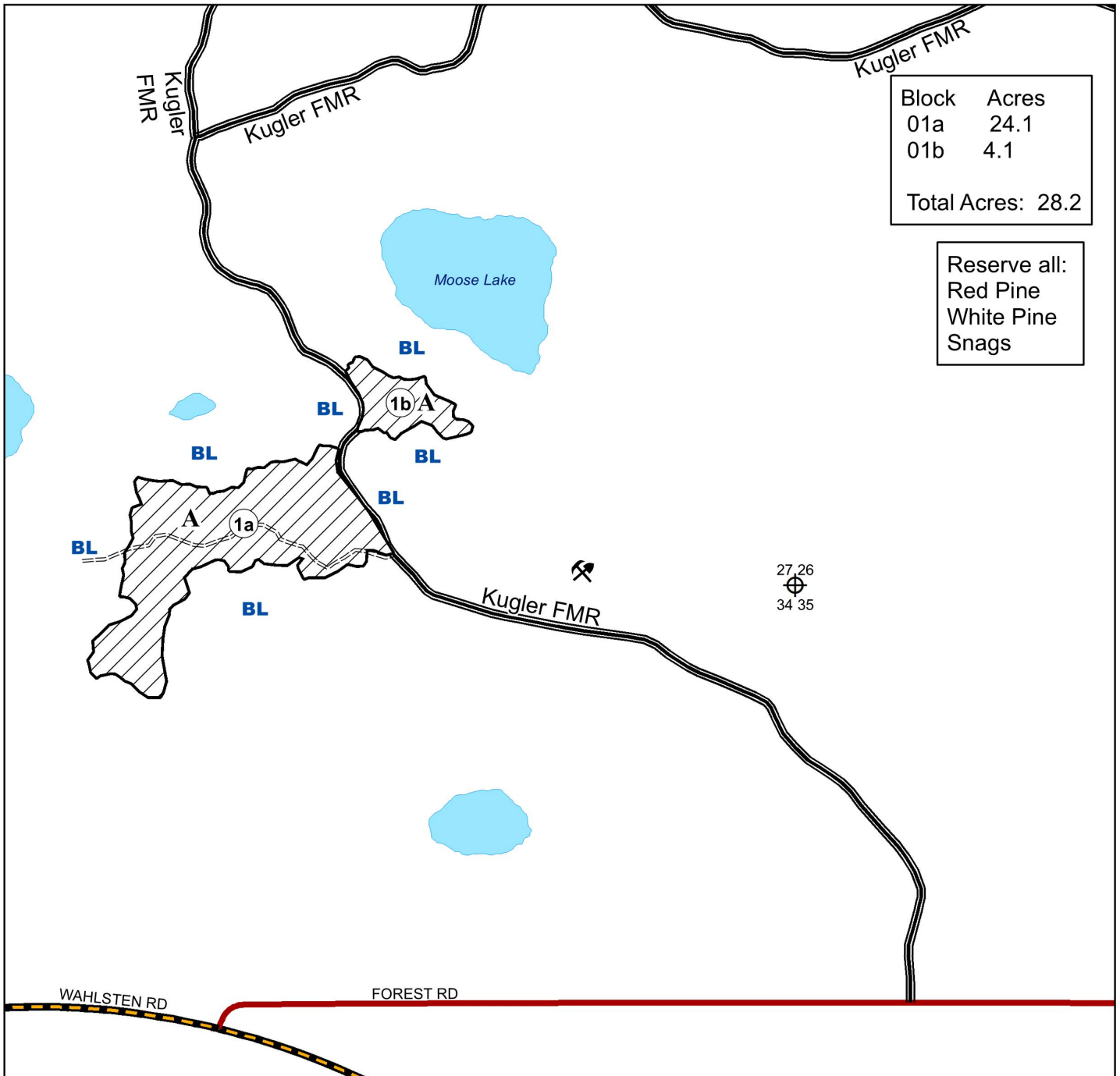
Products	No Bid	Total Volume	Appraised Value	Total Value
Total for Blocks 1				
Aspen		702 Cords @	\$28.01 =	\$19,663.02
SOAV Balsam Fir		29 Cords @	\$7.54 =	\$218.66
SOAV Birch		13 Cords @	\$7.01 =	\$91.13
SOAV Maple-Red		9 Cords @	\$5.23 =	\$47.07
Total Appraised Value:				\$20,019.88



C19260005

St. Louis County

E26-611527



Block	Acres
01a	24.1
01b	4.1
Total Acres: 28.2	

Reserve all:  
Red Pine  
White Pine  
Snags


Prepared By: **Robert Cozzo**

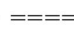
Map Created: 11/6/2025


TRS: 611527


Disclaimer:

This is a compilation of records as they appear in the Saint Louis County Offices affecting the area shown. This drawing is to be used only for reference purposes and the County is not responsible for any inaccuracies herein contained.

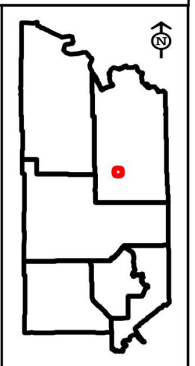
 Clearcut

 Seasonal Woods Road Spur

 Gravel Pit

 Painted Blue Line

A Aspen





# St. Louis County February 26, 2026 Timber Auction

Tract #: 6

E26-621402

Sale Administrator: James Simons

Virginia Area

Total Appraised: \$14,105.20

Twp. 62N Rge. 14W Sec. 2

C19260006

Down Payment Required: \$2,115.78

Total Acres: 37

Expires: 4/15/2029

47° 52.898' N 092° 5.221' W

Blocks: 2

Species	Sticks	Dia.
Aspen	4.2	9.2
Birch	4.0	8.6
Pine-Norway	7.0	13.0
Balsam Fir	3.0	7.0
Spruce-Black	3.0	9.0
Spruce-White	3.0	8.0

## Comments:

Operations on this sale will be required to use GPS technology to determine the location of unpainted block boundaries. See harvest provisions or contact the sale administrator for details.

Block 1 is a marked second thinning of a mature natural red pine stand with skid trails in place.

## Access:

Mud Creek Road #408 to Nicholson Lake woods road.

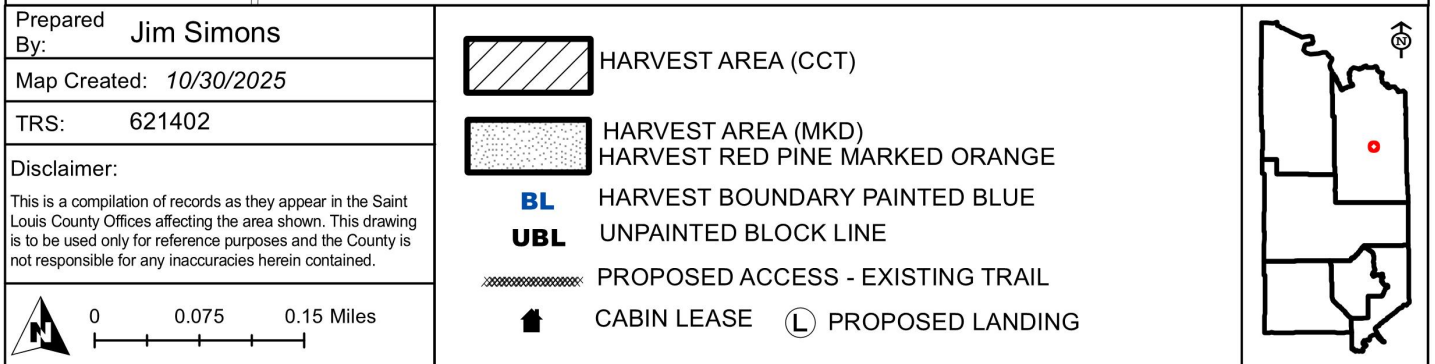
Upon completion of the contract the rock berm will be replaced in the area depicted on the sale map.

Block	Operational Periods
1	Dry soil from September 1 to April 30, operation period may be adjusted with permission, see harvest provisions
2	Dry soil after Road Restrictions or Frozen Ground

Products	No Bid	Total Volume	Appraised Value	Total Value
Total for Blocks 1, 2				
Aspen		281 Cords @	\$28.01 =	\$7,870.81
SOAV Balsam Fir		5 Cords @	\$5.00 =	\$25.00
SOAV Birch		171 Cords @	\$7.01 =	\$1,198.71
Pine-Norway		158 Cords @	\$31.46 =	\$4,970.68
SOAV Spruce-Black		1 Cords @	\$5.00 =	\$5.00
SOAV Spruce-White		7 Cords @	\$5.00 =	\$35.00
Total Appraised Value:				\$14,105.20

Volume Per Block	Block 1	Block 2
Aspen pulpwood		281
Balsam Fir pulpwood		5
Birch pulpwood		171
Pine-Norway pulpwood	158	
Spruce-Black pulpwood		1
Spruce-White pulpwood		7

**St. Louis County**  
***E26-621402***





# St. Louis County February 26, 2026 Timber Auction

Tract #: 7

V26-561225

Sale Administrator: Karl Rudstrom

Virginia Area

Total Appraised: \$276.00

Twp. 56N Rge. 12W Sec. 25

C19260007

Down Payment Required: \$41.40

Total Acres: 18.5

Expires: 4/15/2029

47° 18.662' N 091° 47.61' W

Blocks: 1

Species	Sticks	Dia.
Aspen	4.1	10.1
Pine-Jack	4.3	9.2
Spruce-White	4.8	10.0
Birch	4.7	14.0
Balsam Fir	3.0	6.0

## Comments:

Operations on this sale will be required to use GPS technology to determine the location of unpainted boundaries. See harvest provisions or contact the sale administrator for details.

This sale does not meet our cruising error standards. Please talk to the Sale Administrator for more information.

The purchaser will be required to secure a Road Use Permit from the USFS Laurentian Ranger District in Aurora, MN. The Road Use Permit will involve road toll fees or a maintenance agreement.

Volumes were determined using standard cruise methods. Timber condition may affect accuracy of the estimate. Volumes may also be reduced to account for breakage or other unusable timber. Prospective bidders are encouraged to contact the sale administrator for more information.

Sale has a Seasonal Restricted operating area, contact sale administrator for details.

Average bole char height by species:

-Aspen: 25.8'

-Birch: 39.6'

-Balsam Fir: 25'

-White Spruce: 37.6'

-Jack Pine: 32.8'

- Whole-tree charring present on all species within the stand.

Block	Operational Periods
1	Dry soil or Frozen Ground from November 1 to March 14, operation period may be adjusted with permission, see harvest provisions

Products	No Bid	Total Volume	Appraised Value	Total Value
<b>Total for Blocks 1</b>				
SOAV Aspen		103 Cords @	\$1.00 =	\$103.00
SOAV Balsam Fir		6 Cords @	\$1.00 =	\$6.00
SOAV Birch		8 Cords @	\$1.00 =	\$8.00
SOAV Pine-Jack		97 Cords @	\$1.00 =	\$97.00
SOAV Spruce-White		62 Cords @	\$1.00 =	\$62.00
<b>Total Appraised Value:</b>				<b>\$276.00</b>

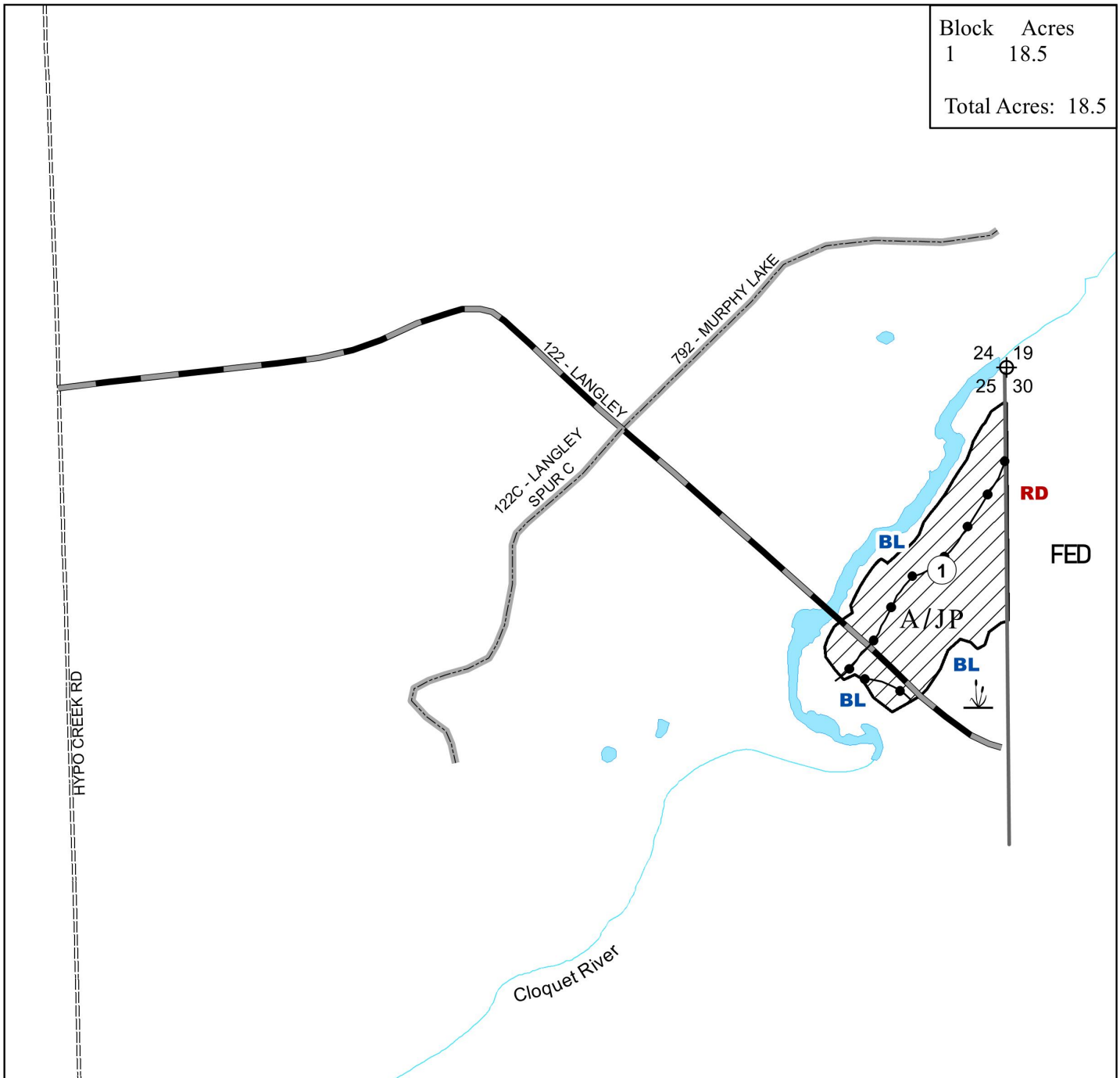


C19260007

St. Louis County

V26-561225

Block	Acres
1	18.5
Total Acres: 18.5	



Prepared By: Karl Rudstrom	Clearcut	A Aspen JP Jack Pine	N
Map Created: 10/21/2025	Gravel Road		
TRS: 561225	Painted Blue Line	Seasonal Restricted Area Unpainted Boundary (8.2 acres)	
Disclaimer: This is a compilation of records as they appear in the Saint Louis County Offices affecting the area shown. This drawing is to be used only for reference purposes and the County is not responsible for any inaccuracies herein contained.	Painted Red Line		
	FED Federal		
Section Corner	Wetland or Marsh		



# St. Louis County February 26, 2026 Timber Auction

Tract #: 8

V26-561615

Sale Administrator: Kyle Andrews

Virginia Area

Total Appraised: \$62,124.21

Twp. 56N Rge. 16W Sec. 15, 22

C19260008

Down Payment Required: \$9,318.63

Expires: 4/15/2029

47° 19.735' N 092° 21.145' W

Total Acres: 102

Blocks: 4

Species	Sticks	Dia.
Aspen	5.3	11.3
Optional-Ash	3.9	9.6
Balsam Fir	3.1	8.3
Ash	3.9	8.8
Maple-Red	3.1	8.5
Spruce-Black	3.9	8.1

**Comments:**

The decision to purchase the Optional Block #5 is to be determined and paid for prior to opening the entire sale or an individual block. Optional block(s) not purchased will be considered reserved and damage penalty's can apply. This sale is in the Emerald Ash Borer Quarantine Area.

Block	Operational Periods
1-5	Frozen Ground

Products	No Bid	Total Volume	Appraised Value	Total Value
<b>Total for Blocks 1, 2, 3, 4</b>				
SOAV Ash	X	147 Cords @	\$5.00 =	\$735.00
Aspen		1950 Cords @	\$28.01 =	\$54,619.50
Balm Of Gilead		32 Cords @	\$28.01 =	\$896.32
Balsam Fir		411 Cords @	\$7.54 =	\$3,098.94
SOAV Birch	X	60 Cords @	\$7.01 =	\$420.60
SOAV Maple-Red	X	118 Cords @	\$5.23 =	\$617.14
SOAV Spruce-Black		84 Cords @	\$14.25 =	\$1,197.00
SOAV Spruce-White		38 Cords @	\$14.00 =	\$532.00
SOAV Tamarack		3 Cords @	\$2.57 =	\$7.71
<b>Total Appraised Value:</b>				<b>\$62,124.21</b>

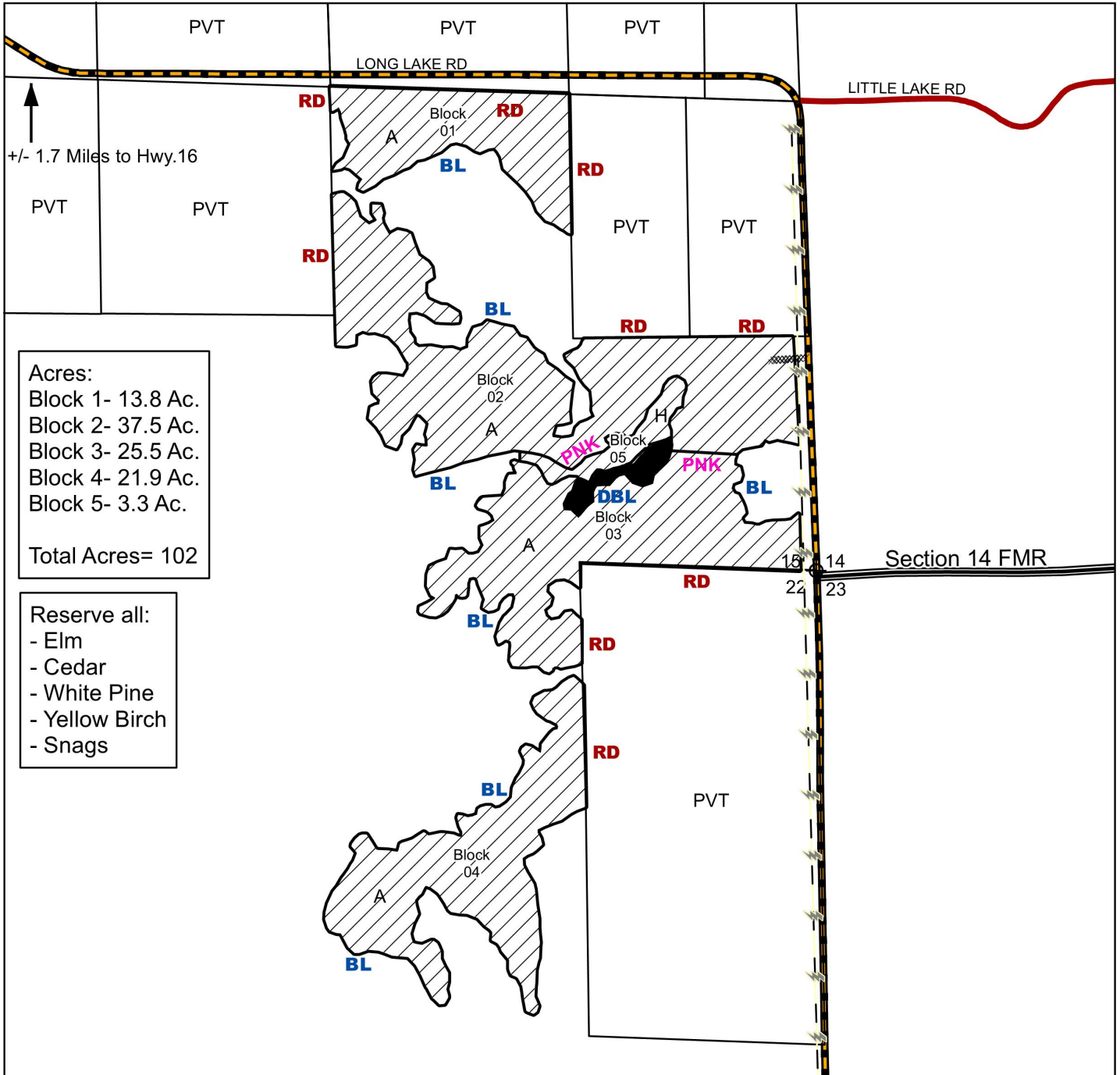
Optional Products	No Bid	Total Volume	Appraised Value	Total Value
<b>Total for Optional Blocks 5</b>				
SOAV Ash	X	91 Cords @	\$5.00 =	\$455.00
SOAV Birch	X	1 Cords @	\$7.01 =	\$7.01
SOAV Maple-Red	X	6 Cords @	\$5.23 =	\$31.38
<b>Total Appraised Value:</b>				<b>\$493.39</b>

Optional products will not be included into the 15% downpayment of the appraised value and will not be factored into the bid value.

Volume Per Block	Block 1	Block 2	Block 3	Block 4
Ash pulpwood	21	86	36	4
Aspen pulpwood	272	570	510	598
Balm Of Gilead pulpwood		32		
Balsam Fir pulpwood	37	125	135	114
Birch pulpwood	13	35	12	
Maple-Red pulpwood	10	84	24	
Spruce-Black pulpwood		13		71
Spruce-White pulpwood	10	7	15	6
Tamarack pulpwood		3		

C19260008

St. Louis County  
V26-561615



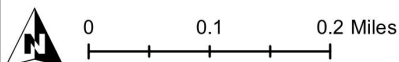
Prepared  
By: Andrews

Map Created: 11/10/25

TRS: 56-16-15&22

Disclaimer:

This is a compilation of records as they appear in the Saint Louis County Offices affecting the area shown. This drawing is to be used only for reference purposes and the County is not responsible for any inaccuracies herein contained.



- Clearcut (CCT)



- Reserve Area

**BL** Painted Blue Line

**RD** Painted Red Line

**PNK** Painted Pink Block Line

**DBL** Painted Double Blue Line

**A** Aspen

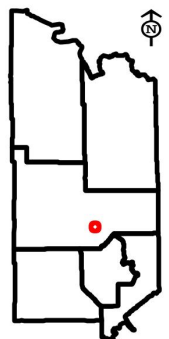
**H** Ash

 Section Corner

**PVT** Private

 Proposed Access Road

 Powerline





# St. Louis County February 26, 2026 Timber Auction

Tract #: 9

V26-571332

Sale Administrator: Thomas Salzer

Virginia Area

C19260009

Total Acres: 118.3

Blocks: 2

Total Appraised: \$31,646.87

Down Payment Required: \$4,747.03

Expires: 4/15/2029

Twp. 56N Rge. 13W Sec. 2 and Twp. 57N Rge. 13W Sec. 31, 32

47° 22.515' N 092° 1.019' W

Species	Sticks	Dia.
Aspen	4.1	11.2
Spruce-Black	3.6	9.1
Birch	3.2	10.2
Spruce-White	4.8	12.5
Balsam Fir	2.3	7.9
Maple-Red	2.0	7.0

**Comments:**

The purchaser has the option to purchase this sale as advertised or to purchase all species which includes Optional Products if advertised as Sold On Appraised Volume (SOAV).

The USFS Private Road Special Use Permit and its requirements become part of this contract.

This sale is in the Emerald Ash Borer Quarantine Area.

**Access:**

Access off Skibo Lookout Road and Town Line Road.

**Operational Periods:**

Block	Operational Periods
1&2	Frozen Ground

Products	No Bid	Total Volume	Appraised Value	Total Value
<b>Total for Blocks 1, 2</b>				
<b>Aspen</b>		<b>1419 Cords @</b>	<b>\$19.61 =</b>	<b>\$27,826.59</b>
<b>Balm Of Gilead</b>		<b>6 Cords @</b>	<b>\$19.61 =</b>	<b>\$117.66</b>
<b>SOAV Balsam Fir</b>		<b>75 Cords @</b>	<b>\$5.28 =</b>	<b>\$396.00</b>
<b>SOAV Birch</b>		<b>125 Cords @</b>	<b>\$5.00 =</b>	<b>\$625.00</b>
<b>SOAV Maple-Red</b>		<b>6 Cords @</b>	<b>\$5.00 =</b>	<b>\$30.00</b>
<b>SOAV Spruce-Black</b>		<b>206 Cords @</b>	<b>\$9.97 =</b>	<b>\$2,053.82</b>
<b>SOAV Spruce-White</b>		<b>61 Cords @</b>	<b>\$9.80 =</b>	<b>\$597.80</b>
<b>Total Appraised Value:</b>				<b>\$31,646.87</b>

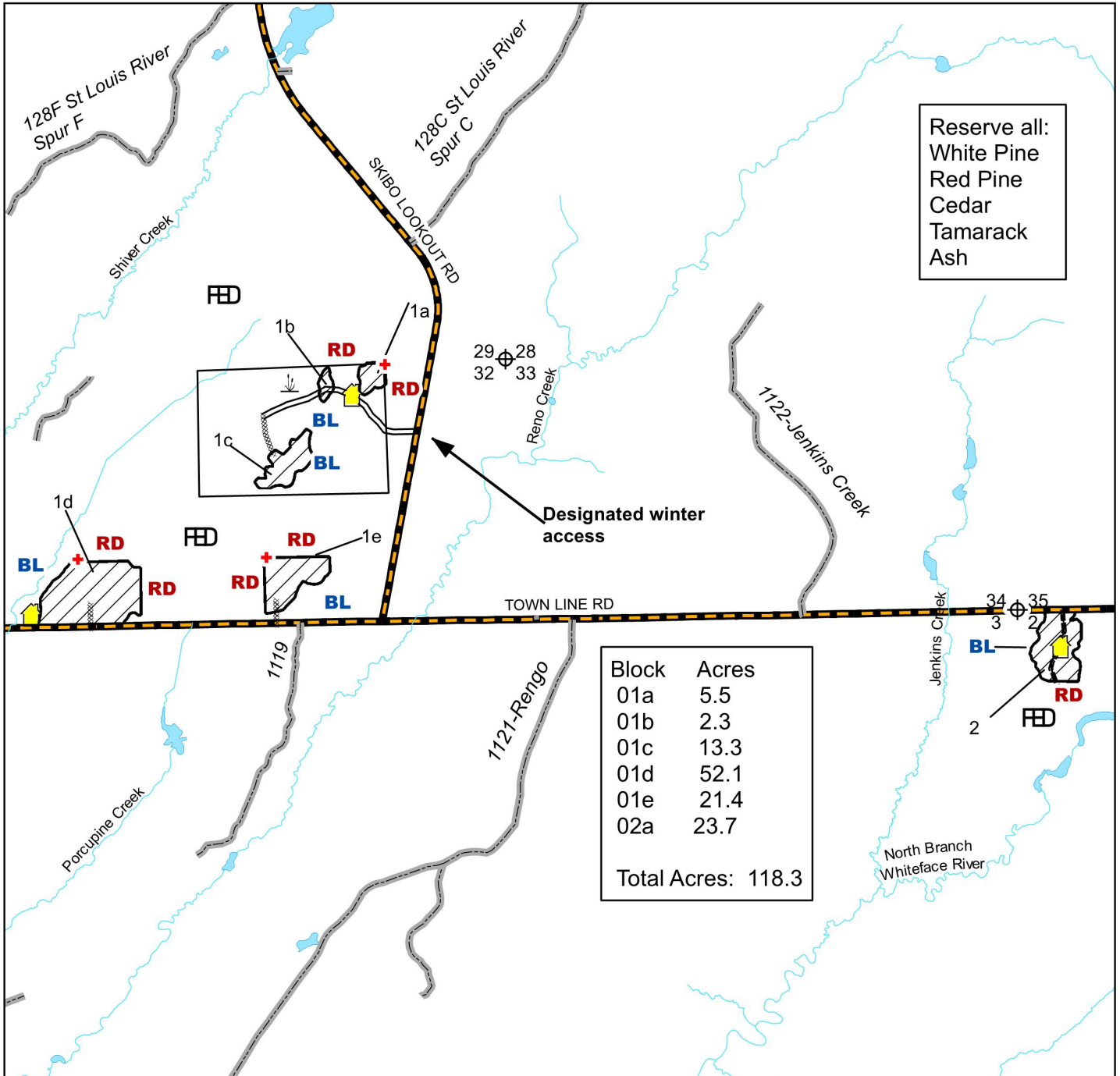
Volume Per Block	Block 1	Block 2
Aspen pulpwood	1129	290
Balm Of Gilead pulpwood	6	
Balsam Fir pulpwood	56	19
Birch pulpwood	107	18
Maple-Red pulpwood	6	
Spruce-Black pulpwood	206	
Spruce-White pulpwood	56	5



C19260009

St. Louis County

V26-571332



Reserve all:  
White Pine  
Red Pine  
Cedar  
Tamarack  
Ash

Prepared By: <b>Salzer</b>	Clearcut	Proposed Access Road	
Map Created: 9/4/2025	<b>FED</b> Federal	Seasonal Woods Road	
TRS: 571331	Section Corner	<b>BL</b> Painted Blue Line	
Disclaimer: This is a compilation of records as they appear in the Saint Louis County Offices affecting the area shown. This drawing is to be used only for reference purposes and the County is not responsible for any inaccuracies herein contained.	Wetland or Marsh	<b>RD</b> Painted Red Line	
	Survey Marker (protect)		
	Cabin Lease		



# St. Louis County February 26, 2026 Timber Auction

Tract #: 10

V26-581301

Sale Administrator: Karl Rudstrom

Virginia Area

Total Appraised: \$607.00

Twp. 58N Rge. 13W Sec. 1, 12

C19260010

Down Payment Required: \$91.05

Total Acres: 39.5

Expires: 4/15/2029

47° 31.791' N 091° 56.326' W

Blocks: 1

Species	Sticks	Dia.
Aspen	4.2	10.3
Pine-Jack	3.0	9.8
Balsam Fir	2.4	7.3
Birch	3.2	10.3
Maple-Red	2.0	7.0
Tamarack	4.0	11.0

## Comments:

This sale does not meet our cruising error standards. Please talk to the Sale Administrator for more information.

The purchaser will be required to secure a Road Use Permit from the USFS Laurentian Ranger District in Aurora, MN. The Road Use Permit will involve road toll fees or a maintenance agreement.

Volumes were determined using standard cruise methods. Timber condition may affect accuracy of the estimate. Volumes may also be reduced to account for breakage or other unusable timber. Prospective bidders are encouraged to contact the sale administrator for more information.

Varying amounts of charring on trees on the sale. Char heights are variable. Contact sale administrator for details.

## Operational Periods:

Block	Operational Periods
1	Dry soil after Road Restrictions or Frozen Ground

Products	No Bid	Total Volume	Appraised Value	Total Value
Total for Blocks 1				
SOAV Aspen		530 Cords @	\$1.00 =	\$530.00
SOAV Balsam Fir		27 Cords @	\$1.00 =	\$27.00
SOAV Birch		24 Cords @	\$1.00 =	\$24.00
SOAV Maple-Red		7 Cords @	\$1.00 =	\$7.00
SOAV Pine-Jack		12 Cords @	\$1.00 =	\$12.00
SOAV Spruce-Black		2 Cords @	\$1.00 =	\$2.00
SOAV Tamarack		5 Cords @	\$1.00 =	\$5.00
Total Appraised Value:				\$607.00

C19260010

St. Louis County

V26-581301

Block Acres

1a 19.0

1b 20.5

Total Acres: 39.5

Average Measured Char Height:  
(From Base of Tree)

BLOCK 1:

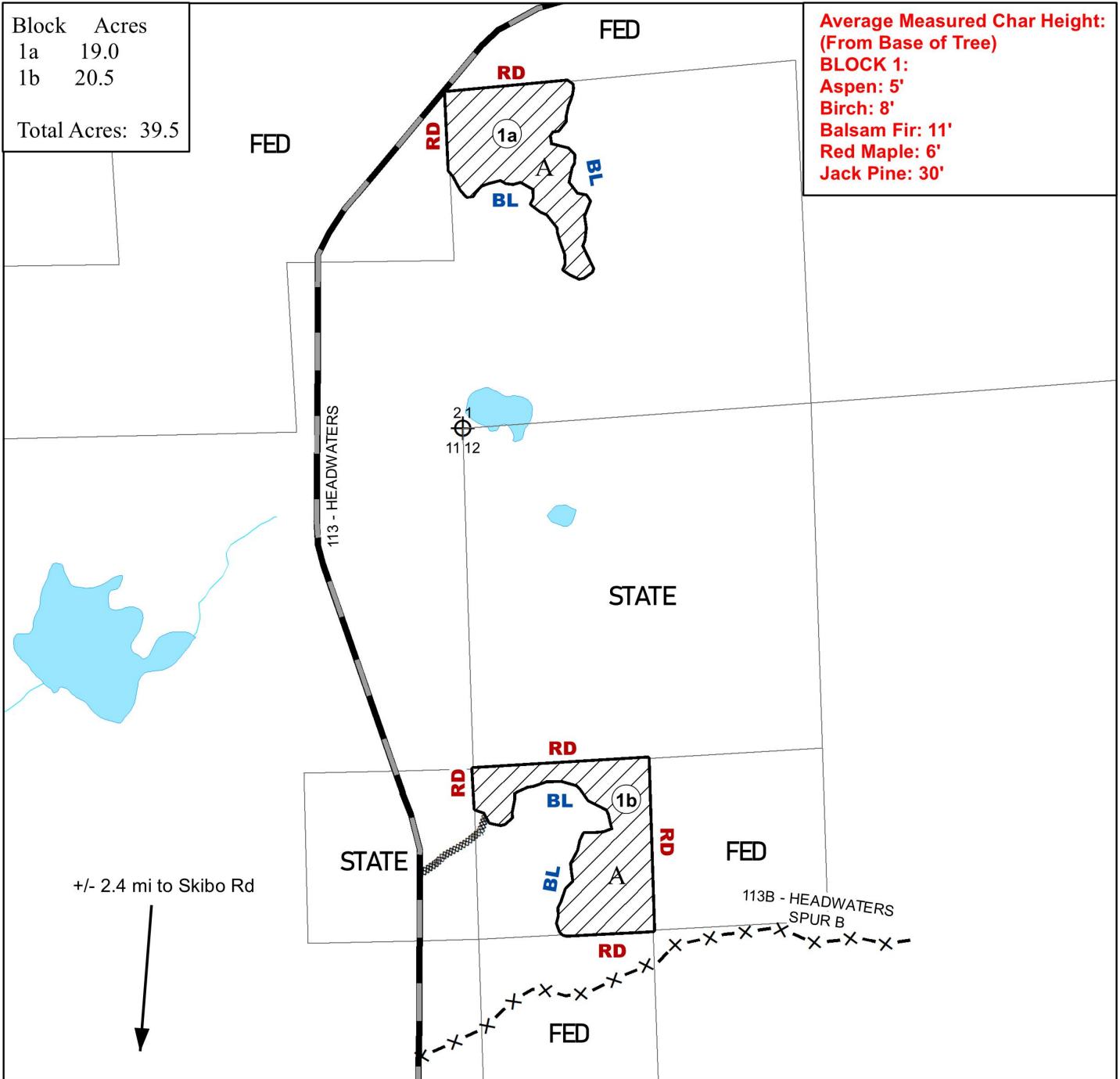
Aspen: 5'

Birch: 8'

Balsam Fir: 11'

Red Maple: 6'

Jack Pine: 30'



Prepared By: Karl Rudstrom

Map Created: 7/2/2025

TRS: 581301

Disclaimer:

This is a compilation of records as they appear in the Saint Louis County Offices affecting the area shown. This drawing is to be used only for reference purposes and the County is not responsible for any inaccuracies herein contained.



Clearcut

BL

Painted Blue Line

RD

Painted Red Line



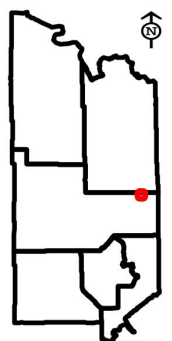
Proposed Access Road  
(Existing Woods Road)



Section Corner

A Aspen

FED Federal





# St. Louis County February 26, 2026 Timber Auction

Tract #: 11

V26-581335

Sale Administrator: Karl Rudstrom

Virginia Area

Total Appraised: \$266.00

Twp. 58N Rge. 13W Sec. 35

C19260011

Down Payment Required: \$39.90

Total Acres: 21.3

Expires: 4/15/2029

47° 27.931' N 091° 57.114' W

Blocks: 1

Species	Sticks	Dia.
Aspen	4.2	9.3
Maple-Red	2.2	8.3
Birch	3.4	11.3
Balsam Fir	2.0	7.0
Pine-Jack	4.0	14.0
Ash	2.3	6.0

## Comments:

Operations on this sale will be required to use GPS technology to determine the location of unpainted boundaries. See harvest provisions or contact the sale administrator for details.

This sale does not meet our cruising error standards. Please talk to the Sale Administrator for more information.

The purchaser will be required to secure a Road Use Permit from the USFS Laurentian Ranger District in Aurora, MN. The Road Use Permit will involve road toll fees or a maintenance agreement.

Volumes were determined using standard cruise methods. Timber condition may affect accuracy of the estimate. Volumes may also be reduced to account for breakage or other unusable timber. Prospective bidders are encouraged to contact the sale administrator for more information.

This sale is in the Emerald Ash Borer Quarantine Area.

This sale is a salvage due to fire. Contract species contain intermittent whole tree charring to very minor charring. Contact Sale administrator for details.

## Operational Periods:

Block	Operational Periods
1	Dry soil after Road Restrictions or Frozen Ground

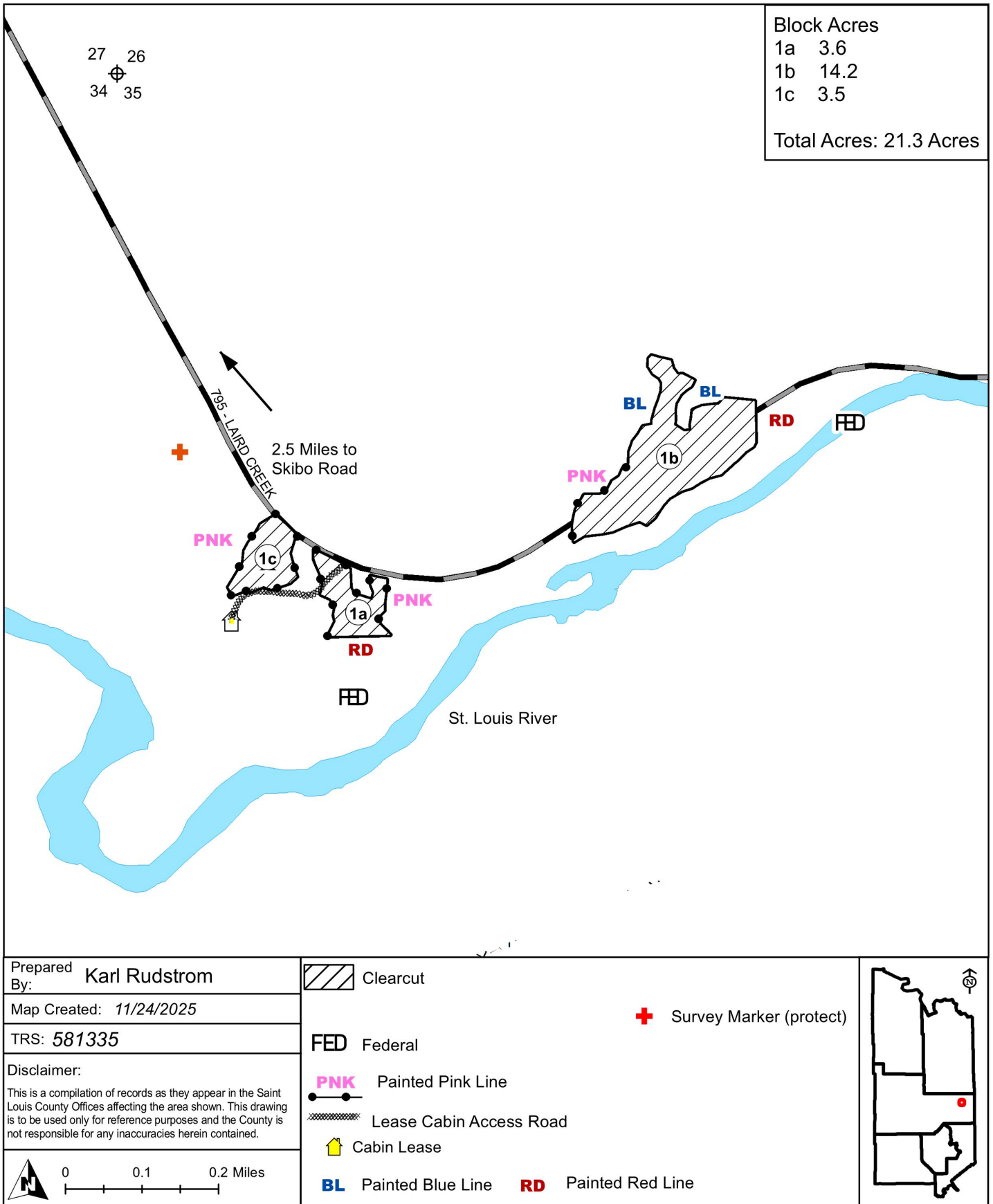
Products	No Bid	Total Volume	Appraised Value	Total Value
Total for Blocks 1				
SOAV Ash		2 Cords @	\$1.00 =	\$2.00
SOAV Aspen		225 Cords @	\$1.00 =	\$225.00
SOAV Balsam Fir		4 Cords @	\$1.00 =	\$4.00
SOAV Birch		13 Cords @	\$1.00 =	\$13.00
SOAV Maple-Red		18 Cords @	\$1.00 =	\$18.00
SOAV Pine-Jack		4 Cords @	\$1.00 =	\$4.00
Total Appraised Value:				\$266.00



C19260011

St. Louis County

V25-581335





# St. Louis County February 26, 2026 Timber Auction

Tract #: 12

V26-582023

Sale Administrator: Karl Rudstrom

Virginia Area

Total Appraised: \$63,581.58

Twp. 58N Rge. 20W Sec. 23, 24

C19260012

Down Payment Required: \$9,537.24

Total Acres: 95.2

Expires: 4/15/2029

47° 29.421' N 092° 49.629' W

Blocks: 3

Species	Sticks	Dia.
Aspen	4.8	11.8
Birch	3.5	9.7
Maple-Red	2.5	9.4
Balsam Fir	2.5	7.9
Ash	3.2	7.7
Spruce-White	5.1	15.0

## Comments:

A minimum \$2000.00 of the downpayment will be retained and will be held until the satisfactory completion of the contract.

This sale is in the Emerald Ash Borer Quarantine Area.

Timber sale has a gated or restrictive access, contact the sale administrator for access details.

Purchaser must obtain additional Access/Use License Agreement from RGGS prior to beginning work on the sale involving insurance requirements and fees. Contact sale administrator for details.

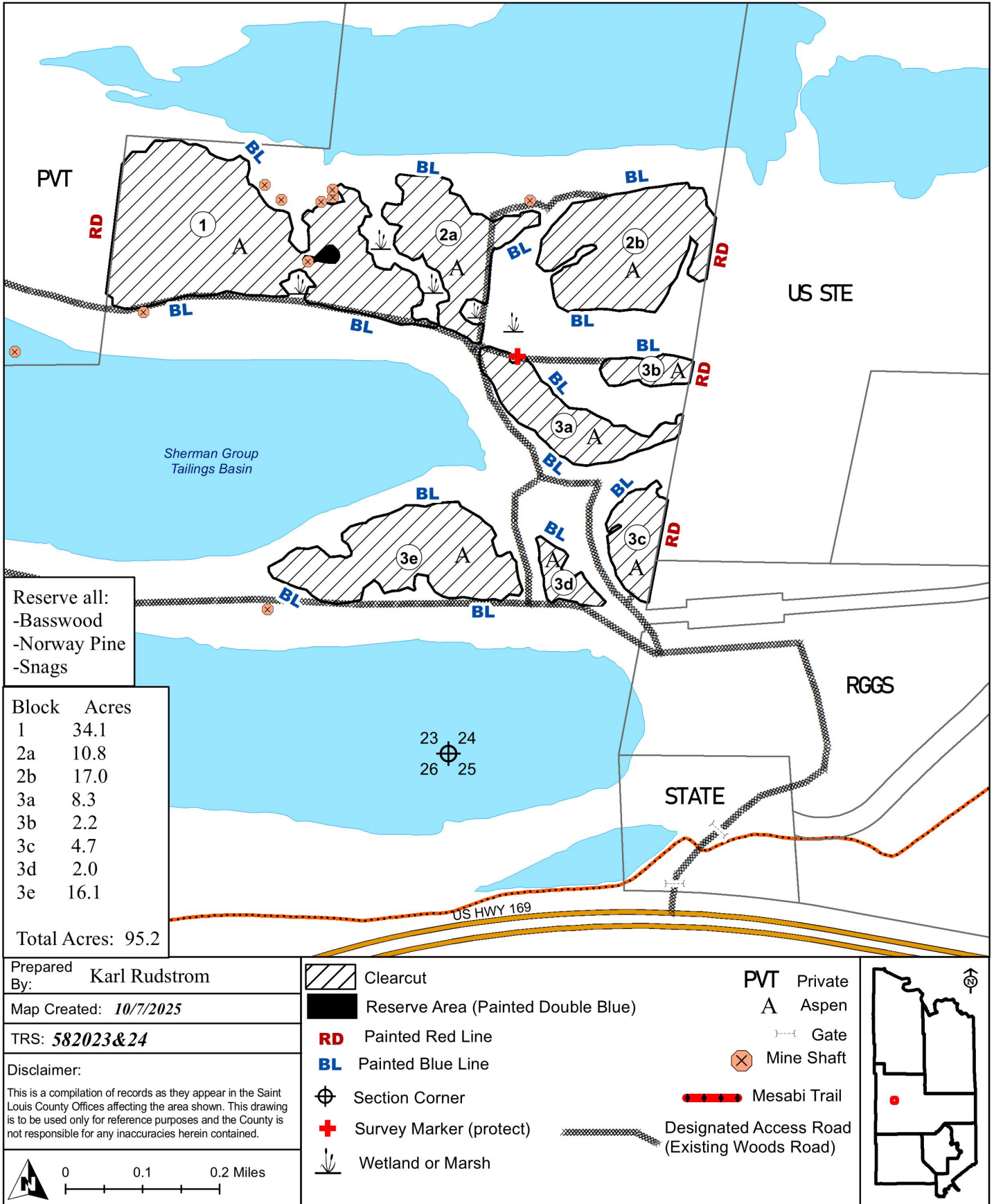
Block	Operational Periods
1-3	Frozen Ground

Products	No Bid	Total Volume	Appraised Value	Total Value
Total for Blocks 1, 2, 3				
SOAV Ash		64 Cords @	\$5.50 =	\$352.00
Aspen		1935 Cords @	\$30.81 =	\$59,617.35
Balsam Fir		130 Cords @	\$8.29 =	\$1,077.70
SOAV Birch		159 Cords @	\$7.72 =	\$1,227.48
SOAV Maple-Red		155 Cords @	\$5.75 =	\$891.25
Spruce-White		27 Cords @	\$15.40 =	\$415.80
Total Appraised Value:				\$63,581.58

Volume Per Block	Block 1	Block 2	Block 3
Ash pulpwood	48	13	3
Aspen pulpwood	696	486	753
Balsam Fir pulpwood	74	54	2
Birch pulpwood	38	81	40
Maple-Red pulpwood	83	44	28
Spruce-White pulpwood	16	7	4

C19260012

St. Louis County  
V26-582023





# St. Louis County February 26, 2026 Timber Auction

Tract #: 13

B26-531302

Sale Administrator: Robert Benson

Pike Lake Area

Total Appraised: \$7,482.67

Twp. 53N Rge. 13W Sec. 2

C19260013

Down Payment Required: \$1,122.40

Total Acres: 35.2

Expires: 4/15/2029

47° 6.122' N 091° 57.432' W

Blocks: 1

Species	Sticks	Dia.
Spruce-Black	3.3	6.6
Tamarack	3.4	7.4
Balsam Fir	2.8	7.0

**Comments:**

The purchaser has the option to purchase this sale as advertised or to purchase all species as Sold On Appraised Volume (SOAV). Optional Products will be included with the SOAV option if advertised.

**Access:**

Access will be from the Lieung FMR, and the sale is located approximately 2 1/4 miles off from Hwy 44.

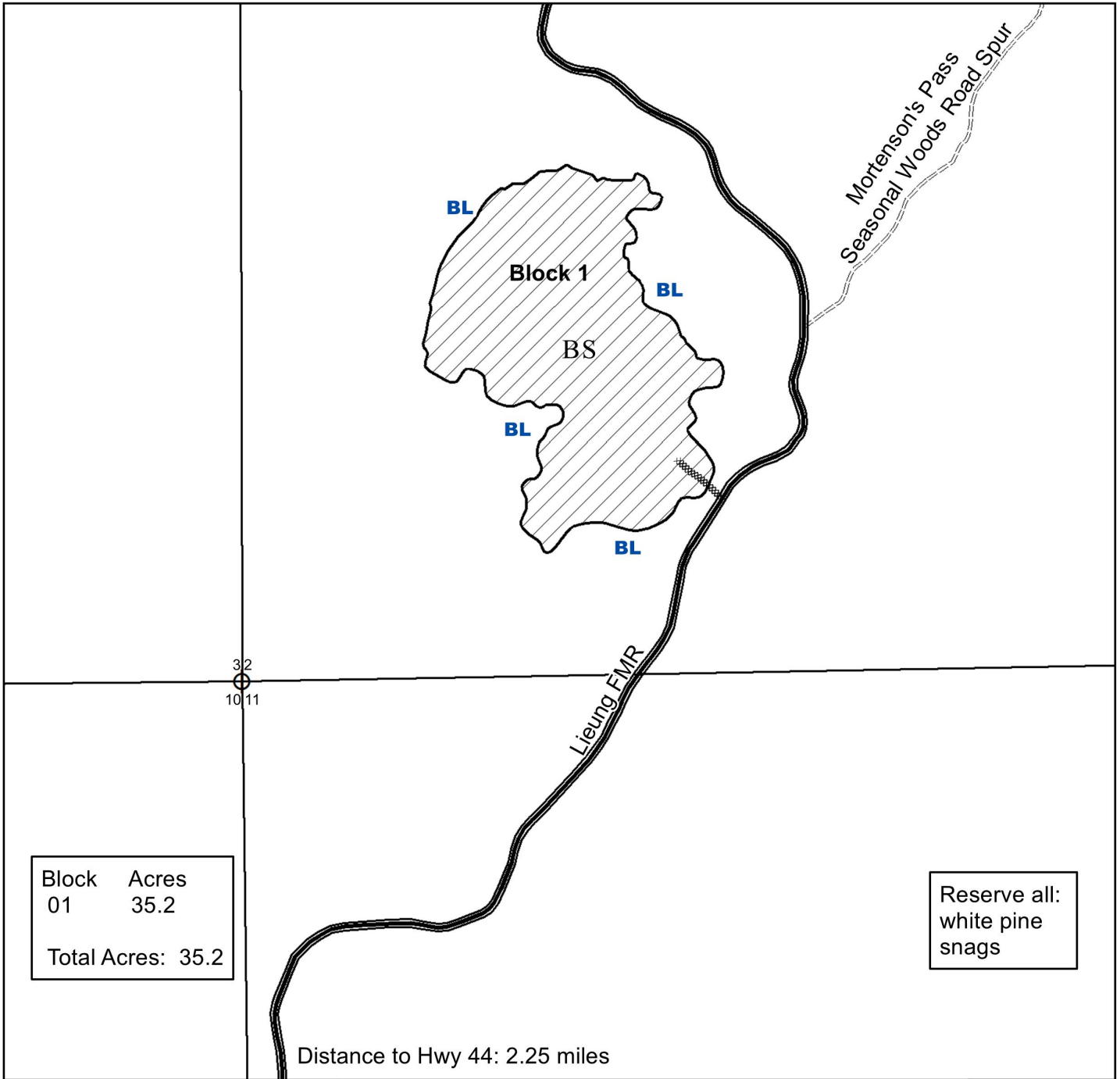
Block	Operational Periods
1	Frozen Ground

Products	No Bid	Total Volume	Appraised Value	Total Value
<b>Total for Blocks 1</b>				
Balsam Fir		9 Cords @	\$6.03 =	\$54.27
Spruce-Black		648 Cords @	\$11.40 =	\$7,387.20
SOAV Tamarack		20 Cords @	\$2.06 =	\$41.20
<b>Total Appraised Value:</b>				<b>\$7,482.67</b>

C19260013

St. Louis County

B26-531302



Prepared By: Robert Benson

Map Created: 11/19/2025

TRS: 531302

Disclaimer:

This is a compilation of records as they appear in the Saint Louis County Offices affecting the area shown. This drawing is to be used only for reference purposes and the County is not responsible for any inaccuracies herein contained.



Clearcut

BS

Black Spruce



Section Corner



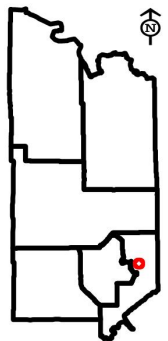
Proposed Winter Access

BL

Painted Blue Line



0 0.075 0.15 Miles







# St. Louis County February 26, 2026 Timber Auction

Tract #: 14

B26-541318

Sale Administrator: Robert Benson

Pike Lake Area

Total Appraised: \$72,099.83

Twp. 54N Rge. 13W Sec. 18

C19260014

Down Payment Required: \$10,814.97

Total Acres: 96.7

Expires: 4/15/2029

47° 9.79' N 092° 2.516' W

Blocks: 4

Species	Sticks	Dia.
Aspen	4.4	9.8
Balsam Fir	2.3	7.3
Maple-Red	2.4	9.0
Birch	2.9	8.9
Balm Of Gilead	3.2	8.2
Spruce-White	4.1	12.7

## Comments:

Operations on this sale will be required to use GPS technology to determine the location of unpainted boundaries. See harvest provisions or contact the sale administrator for details.

There is an outbreak of Spruce budworm infecting balsam fir species on this sale. Only currently live trees were cruised.

This sale is in the Emerald Ash Borer Quarantine Area.

## Access:

Access to this sale can either be from the Hulligan Forest Management Road (6.8 miles to Hwy 4) or from the Carrol Trail (7.5 miles to Hwy 4).

At least 1 culvert will need to be installed on the existing access route identified on the map.

## Operational Periods:

Dry soil after June 1 or Frozen Ground

Block	Operational Periods
1,2,3,4	Dry soil after June 1 or Frozen Ground

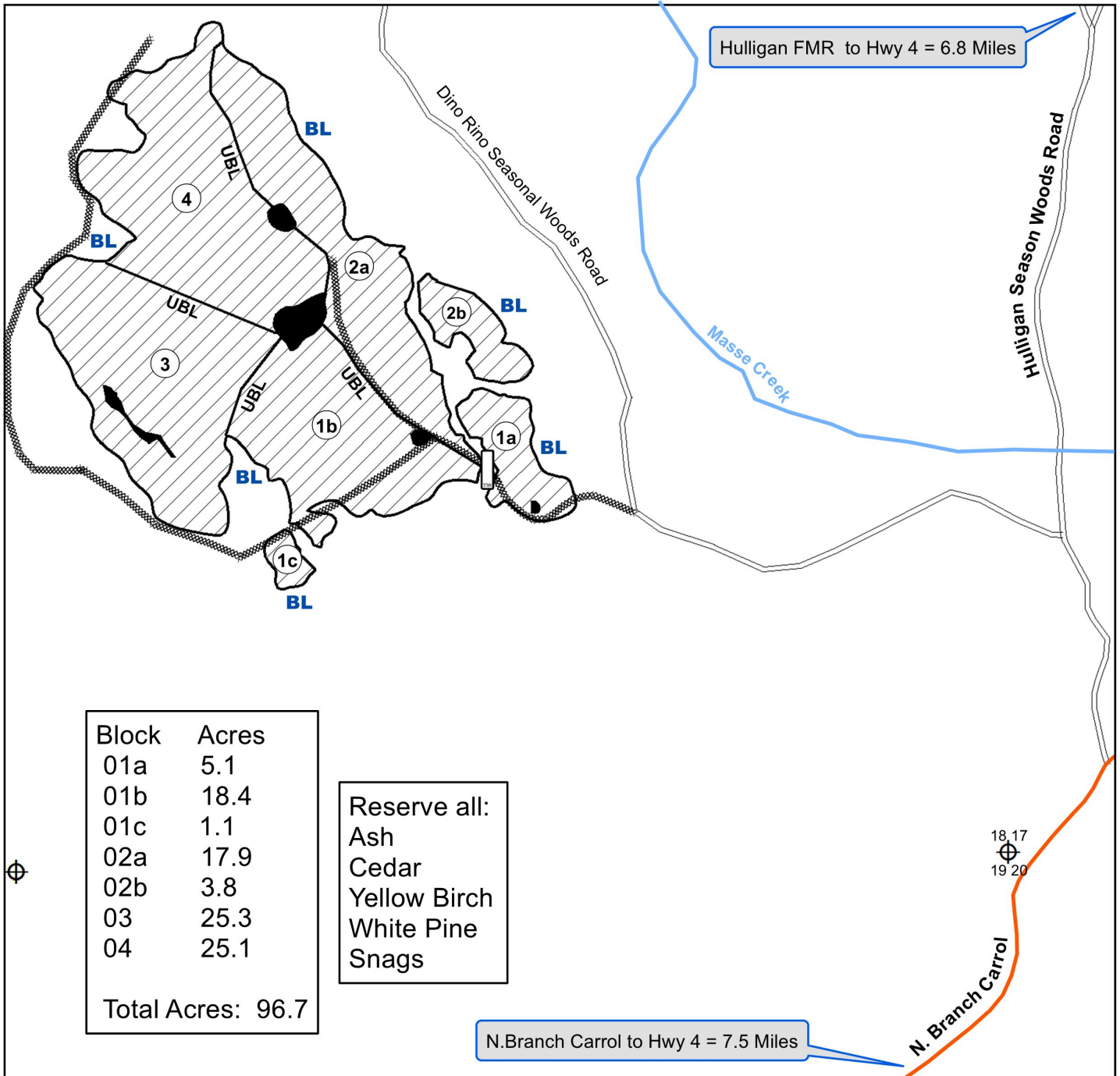
Products	No Bid	Total Volume	Appraised Value	Total Value
Total for Blocks 1, 2, 3, 4				
Aspen		2447 Cords @	\$28.01 =	\$68,540.47
Balm Of Gilead		80 Cords @	\$28.01 =	\$2,240.80
Balsam Fir		62 Cords @	\$7.54 =	\$467.48
SOAV Birch		29 Cords @	\$7.01 =	\$203.29
SOAV Maple-Red		73 Cords @	\$5.23 =	\$381.79
SOAV Spruce-White		19 Cords @	\$14.00 =	\$266.00
Total Appraised Value:				\$72,099.83

Volume Per Block	Block 1	Block 2	Block 3	Block 4
Aspen pulpwood	566	538	674	669
Balm Of Gilead pulpwood	15	25	20	20
Balsam Fir pulpwood	20	12	15	15
Birch pulpwood	13	4	6	6
Maple-Red pulpwood	27	20	13	13
Spruce-White pulpwood	3	8	4	4

C19260014

St. Louis County

B26-541318



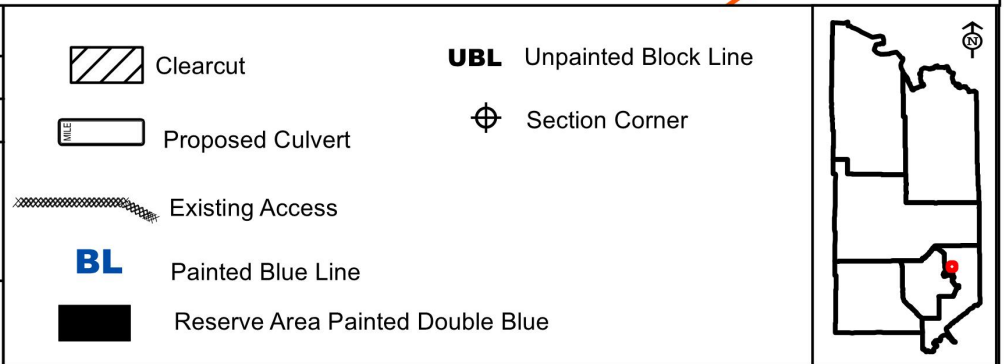
Prepared By: Robert Benson

Map Created: 11/4/2025

TRS: 541318

Disclaimer:

This is a compilation of records as they appear in the Saint Louis County Offices affecting the area shown. This drawing is to be used only for reference purposes and the County is not responsible for any inaccuracies herein contained.





# St. Louis County February 26, 2026 Timber Auction

Tract #: 15

B26-541422

Sale Administrator: Thomas Robertson

Pike Lake Area

Total Appraised: \$6,873.24

Twp. 54N Rge. 14W Sec. 22

C19260015

Down Payment Required: \$1,030.99

Total Acres: 13.3

Expires: 4/15/2029

47° 9.18' N 092° 5.788' W

Blocks: 1

Species	Sticks	Dia.
Pine-Norway	6.5	18.0
Spruce-White	5.9	16.0

## Comments:

Operations on this sale will be required to use GPS technology to determine the location of unpainted boundaries. See harvest provisions or contact the sale administrator for details.

This sale does not meet our cruising error standards. Please talk to the Sale Administrator for more information.

There is an outbreak of Spruce budworm infecting white spruce species on this sale. Only currently live trees were cruised.

## Access:

Sale is off of Highway 4 about 9 miles north of Island Lake. Purchaser shall maintain access road to similar or better condition upon completion of contract.

Block	Operational Periods
1	Dry soil from September 1 to April 30, operation period may be adjusted with permission, see harvest provisions

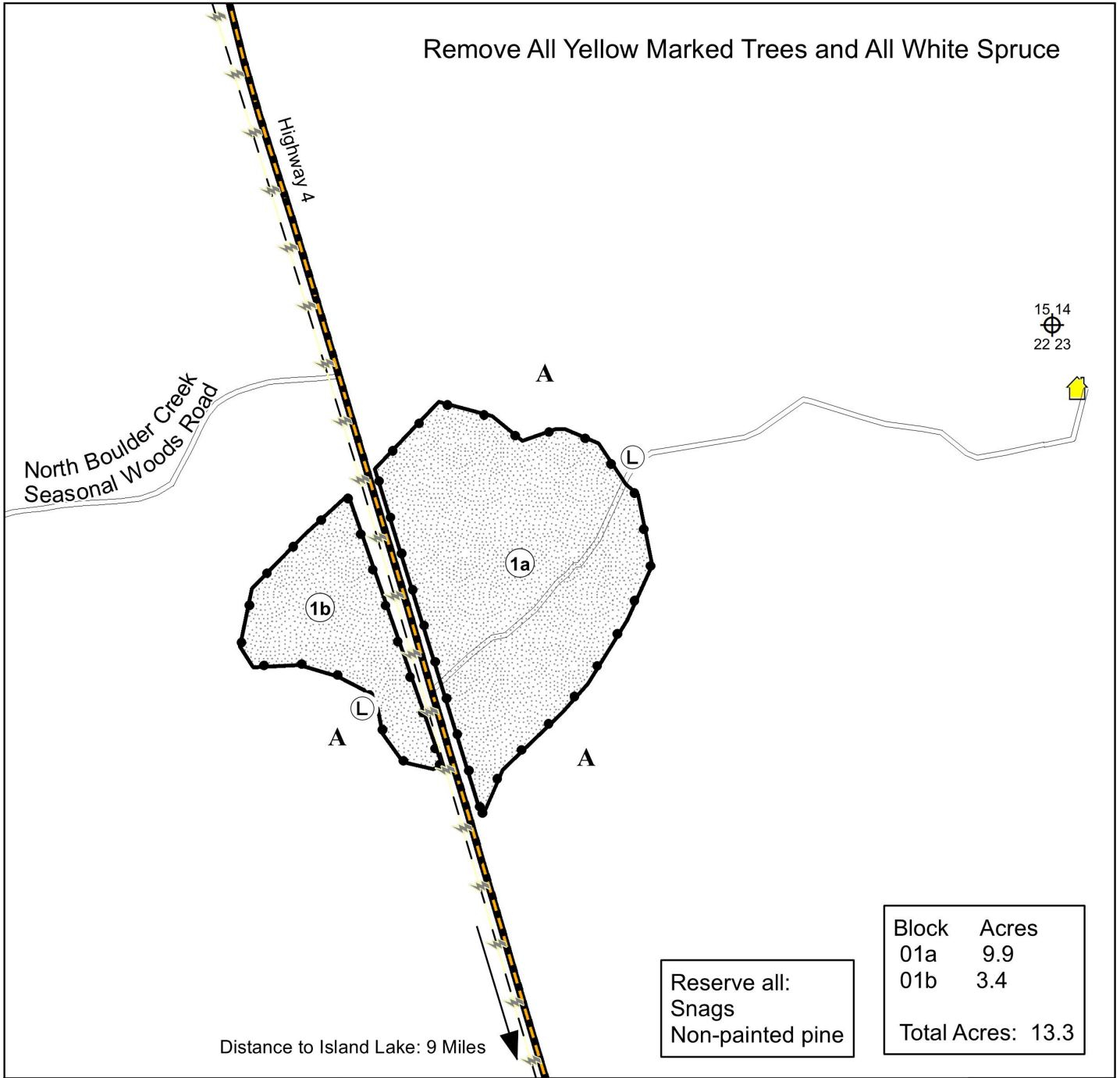
Products	No Bid	Total Volume	Appraised Value	Total Value
<b>Total for Blocks 1</b>				
Pine-Norway		194 Cords @	\$31.46 =	\$6,103.24
Spruce-White		55 Cords @	\$14.00 =	\$770.00
<b>Total Appraised Value:</b>				<b>\$6,873.24</b>

C19260015

St. Louis County

B26-541422

Remove All Yellow Marked Trees and All White Spruce



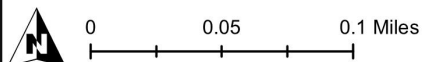
Prepared By: Tom Robertson

Map Created: 10/24/2025

TRS: 541422

Disclaimer:

This is a compilation of records as they appear in the Saint Louis County Offices affecting the area shown. This drawing is to be used only for reference purposes and the County is not responsible for any inaccuracies herein contained.



Marked Thinning

Cabin Leases

Unpainted Boundary

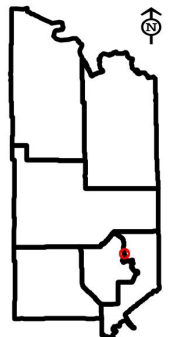
Aspen

Seasonal Woods Road

L Landing

Section Corner

Underground Power Line





# St. Louis County February 26, 2026 Timber Auction

Tract #: 16

B26-551208

Sale Administrator: Anna Nixon

Pike Lake Area

Total Appraised: \$2,195.00

Twp. 55N Rge. 12W Sec. 7, 8, 17, 18

C19260016

Down Payment Required: \$329.25

Total Acres: 21.3

Expires: 4/15/2029

47° 15.412' N 091° 53.909' W

Blocks: 1

Species	Sticks	Dia.
Pine-Norway	4.4	9.0
Aspen	3.3	7.6
Pine-Jack	3.6	7.5
Pine-White	4.1	10.0
Birch	3.0	7.0

## Comments:

Operations on this sale will be required to use GPS technology to determine the location of unpainted boundaries. See harvest provisions or contact the sale administrator for details.

No skidding permitted. All timber must be removed with a forwarder.

This sale includes a self-directed thinning. 15-foot-wide skid trails will be cut with 40-foot-wide leave strips. Harvesting and skidding equipment width must not exceed 12 feet.

Block	Operational Periods
1	Dry soil from September 1 to April 30, operation period may be adjusted with permission, see harvest provisions

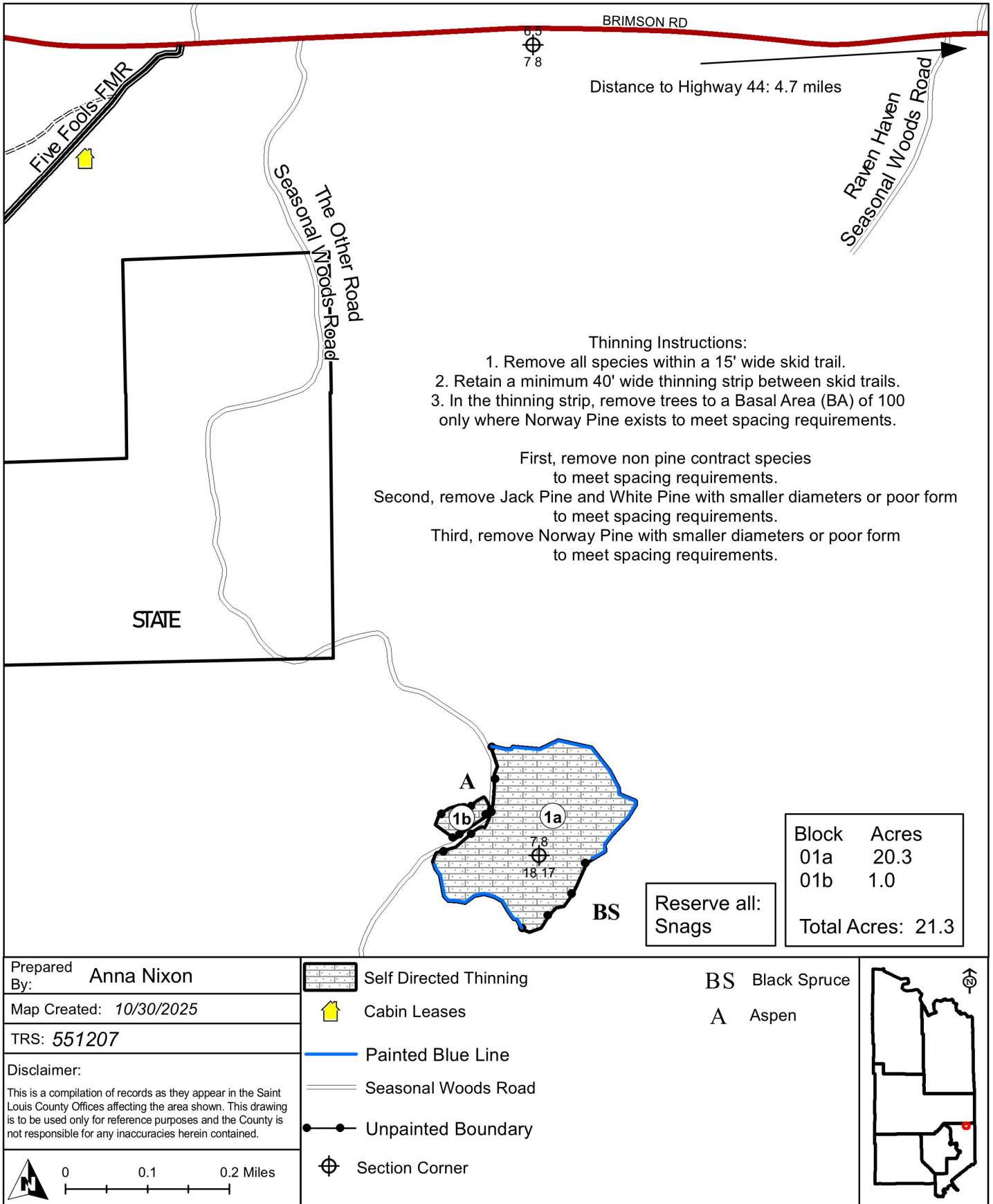
Products	No Bid	Total Volume	Appraised Value	Total Value
Total for Blocks 1				
Aspen		26 Cords @	\$5.00 =	\$130.00
SOAV Birch		2 Cords @	\$5.00 =	\$10.00
Pine-Jack		11 Cords @	\$5.00 =	\$55.00
Pine-Norway		383 Cords @	\$5.00 =	\$1,915.00
Pine-White		17 Cords @	\$5.00 =	\$85.00
Total Appraised Value:				\$2,195.00



C19260016

St. Louis County

B26-551208





# St. Louis County February 26, 2026 Timber Auction

Tract #: 17

B26-551218A

Sale Administrator: Drake Schroeder

Pike Lake Area

Total Appraised: \$64,591.16

Twp. 55N Rge. 12W Sec. 18, 19

C19260017

Down Payment Required: \$9,688.67

Total Acres: 65.4

Expires: 4/15/2029

47° 14.62' N 091° 54.873' W

Blocks: 3

Species	Sticks	Dia.
Pine-Jack	4.1	9.0
Pine-Norway	4.3	9.6
Aspen	3.9	8.2

## Comments:

The purchaser has the option to purchase this sale as advertised or to purchase all species as Sold On Appraised Volume (SOAV). Optional Products will be included with the SOAV option if advertised.

Operations on this sale will be required to use GPS technology to determine the location of unpainted boundaries. See harvest provisions or contact the sale administrator for details.

Sale has a Seasonal Restricted operating area, contact sale administrator for details.

Concurrent operation of this sale and the adjacent sale B26-551218b is not allowed when owned or operated by the same purchaser or operator.

Block	Operational Periods
1 2 3	See harvest provisions for this sales specified operation dates

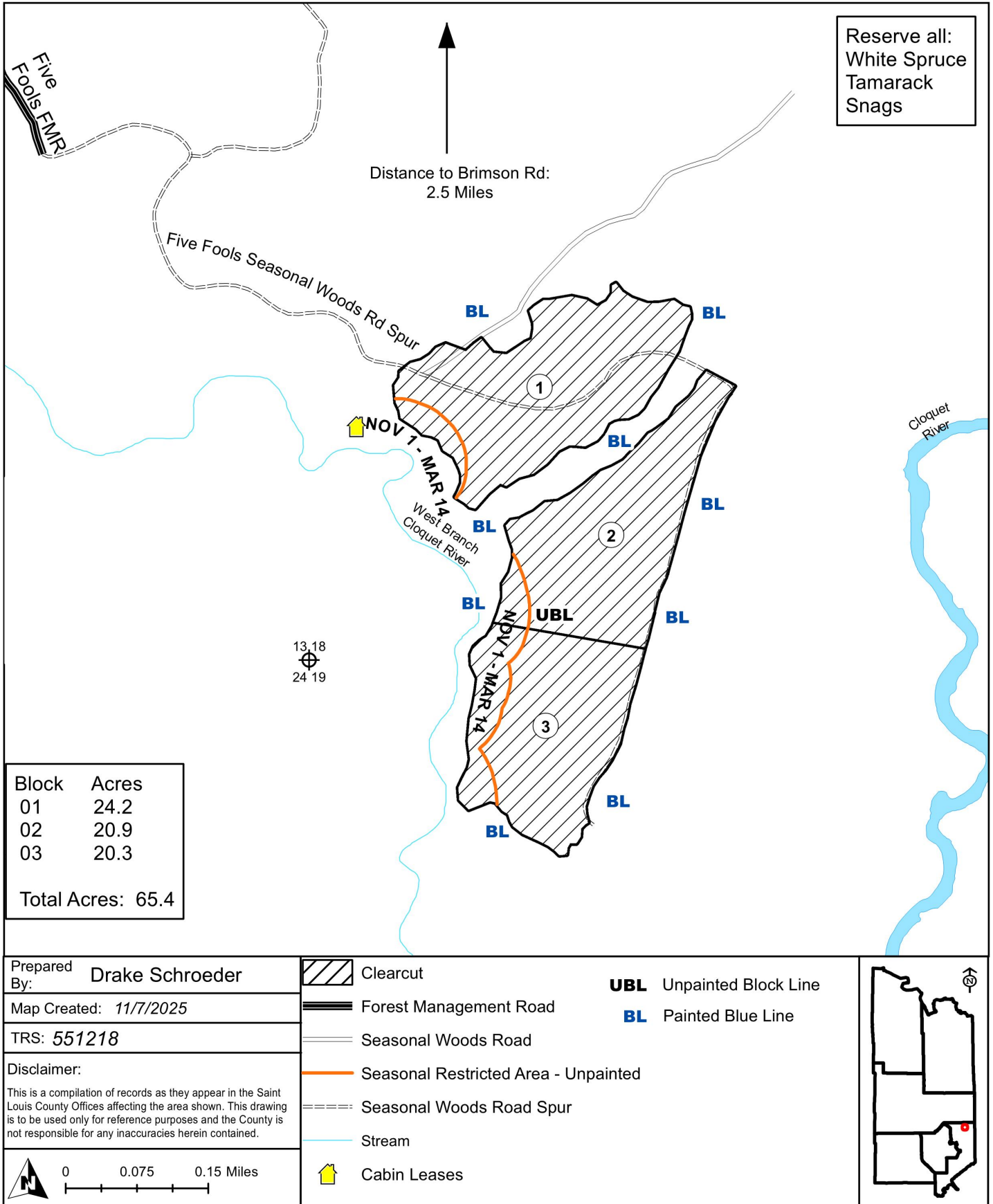
Products	No Bid	Total Volume	Appraised Value	Total Value
Total for Blocks 1, 2, 3				
Aspen		170 Cords @	\$30.81 =	\$5,237.70
Pine-Jack		1386 Cords @	\$17.61 =	\$24,407.46
Pine-Norway		1010 Cords @	\$34.60 =	\$34,946.00
Total Appraised Value:				\$64,591.16

Volume Per Block	Block 1	Block 2	Block 3
Aspen pulpwood	63	54	53
Pine-Jack pulpwood	513	443	430
Pine-Norway pulpwood	374	323	313

C19260017

St. Louis County

B26-551218a





# St. Louis County February 26, 2026 Timber Auction

Tract #: 18

B26-551218B

Sale Administrator: Drake Schroeder

Pike Lake Area

Total Appraised: \$6,800.00

Twp. 55N Rge. 12W Sec. 18, 19

C19260018

Down Payment Required: \$1,020.00

Total Acres: 62.8

Expires: 4/15/2029

47° 14.577' N 091° 54.621' W

Blocks: 1

Species	Sticks	Dia.
Pine-Norway	4.5	10.6
Pine-Jack	4.1	10.2
Aspen	3.8	8.9
Pine-White	6.8	19.7
Spruce-White	4.6	10.6
Birch	3.0	6.0

## Comments:

This sale includes a self-directed thinning. 15-foot-wide skid trails will be cut with 40-foot-wide leave strips. Harvesting and skidding equipment width must not exceed 12 feet.

Concurrent operation of this sale and the adjacent sale B26-551218a is not allowed when owned or operated by the same purchaser or operator.

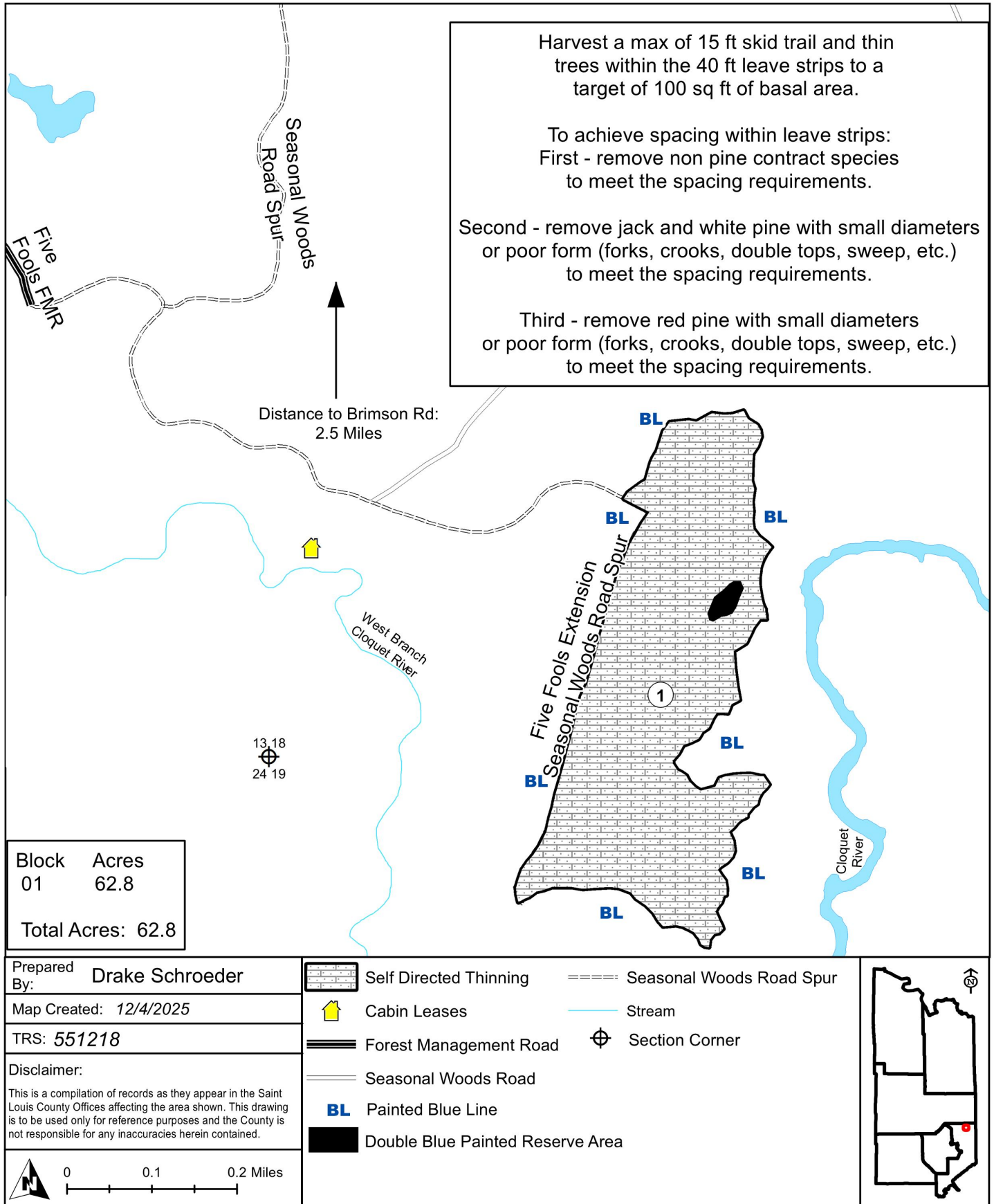
Block	Operational Periods
1	Dry soil from September 15 to April 30

Products	No Bid	Total Volume	Appraised Value	Total Value
<b>Total for Blocks 1</b>				
Aspen		175 Cords @	\$5.00 =	\$875.00
Birch		2 Cords @	\$5.00 =	\$10.00
Pine-Jack		465 Cords @	\$5.00 =	\$2,325.00
Pine-Norway		649 Cords @	\$5.00 =	\$3,245.00
Pine-White		45 Cords @	\$5.00 =	\$225.00
Spruce-White		24 Cords @	\$5.00 =	\$120.00
<b>Total Appraised Value:</b>				<b>\$6,800.00</b>

C19260018

St. Louis County

B26-551218b







# St. Louis County February 26, 2026 Timber Auction

Tract #: 19

B26-551320

Sale Administrator: Alexander Richardson

Pike Lake Area

Total Appraised: \$16,295.00

Twp. 55N Rge. 13W Sec. 20, 29, 30

C19260019

Down Payment Required: \$2,444.25

Total Acres: 168.3

Expires: 4/15/2029

47° 13.743' N 092° 1.309' W

Blocks: 4

Species	Sticks	Dia.
Pine-Norway	3.8	8.5
Balsam Fir	2.1	6.5
Aspen	3.3	7.5
Spruce-White	2.4	6.8
Pine-White	2.8	8.3
Birch	2.0	6.7

## Comments:

Operations on this sale will be required to use GPS technology to determine the location of unpainted boundaries. See harvest provisions or contact the sale administrator for details.

No skidding permitted. All timber must be removed with a forwarder.

A minimum \$1000.00 of the downpayment will be retained and will be held until the satisfactory completion of the contract.

This sale includes a self-directed thinning. 15-foot-wide skid trails will be cut with 40-foot-wide leave strips. Harvesting and skidding equipment width must not exceed 12 feet.

Timber sale has a gated or restrictive access, contact the sale administrator for access details.

Alternate access from the north may be utilized with permission from the private landowners.

A culvert must be installed on the access into block 1A. Culvert and road fabric will be provided.

## Access:

Harvest is accessed using existing forest roads 3.75 miles south of county road 547/Brimson road.

## Operational Periods:

Block	Operational Periods
1,2,3,4	Dry soil from September 1 to April 30, operation period may be adjusted with permission, see harvest provisions

Products	No Bid	Total Volume	Appraised Value	Total Value
<b>Total for Blocks 1, 2, 3, 4</b>				
Aspen		146 Cords @	\$5.00 =	\$730.00
Balsam Fir		188 Cords @	\$5.00 =	\$940.00
Birch		7 Cords @	\$5.00 =	\$35.00
Pine-Norway		2865 Cords @	\$5.00 =	\$14,325.00
Pine-White		10 Cords @	\$5.00 =	\$50.00
Spruce-Black		3 Cords @	\$5.00 =	\$15.00
Spruce-White		37 Cords @	\$5.00 =	\$185.00
Tamarack		3 Cords @	\$5.00 =	\$15.00
<b>Total Appraised Value:</b>				<b>\$16,295.00</b>

Volume Per Block	Block 1	Block 2	Block 3	Block 4
Aspen pulpwood	37	89	7	13
Balsam Fir pulpwood	32	83	43	30
Birch pulpwood	1	2	4	
Pine-Norway pulpwood	634	625	728	878
Pine-White pulpwood	1	3	1	5
Spruce-Black pulpwood				3
Spruce-White pulpwood	9	19	3	6
Tamarack pulpwood	1	1		1

C19260019

St. Louis County

B26-551320

- Remove all species within a maximum of 15' wide skid trail
- Retain a Minimum 40' thinning strip between trails
- Target residual basal area of 100 sq. ft
- Retain a 20' thinning strip around the perimeter of the sale area

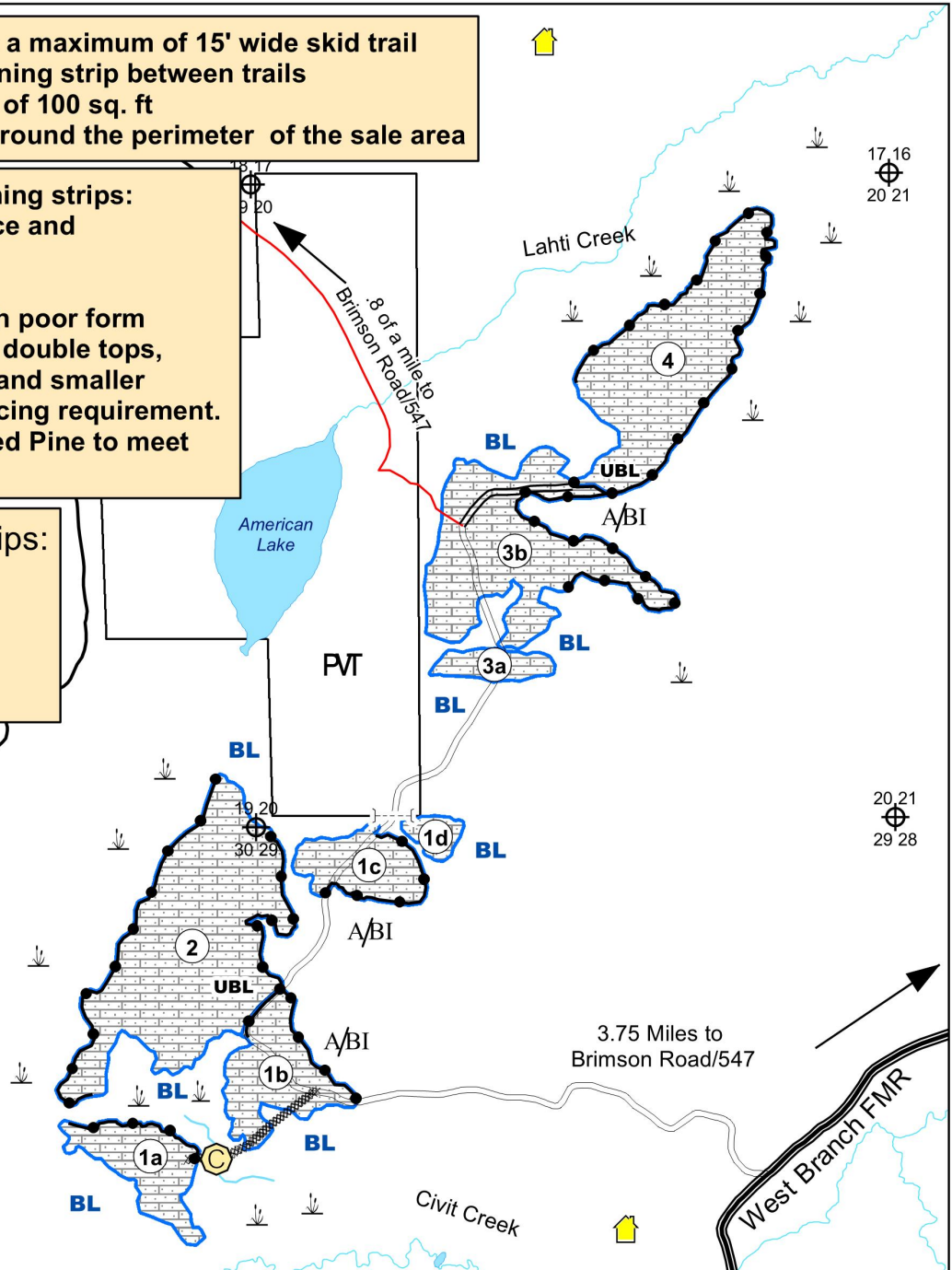
**Order of Removals in thinning strips:**

- 1st: Remove Aspen, Spruce and Balsam Fir to meet spacing requirement.
- 2nd: Remove Red Pine with poor form or defect (fork, crook, double tops, sweep, damage etc.) and smaller diameter to meet spacing requirement.
- 3rd: Remove additional Red Pine to meet spacing requirement.

**Reserve in thinning strips:**

White Pine  
Paper Birch  
Tamarack

Block	Acres
01a	11.4
01b	14.5
01c	10.5
01d	2.4
02	53.8
03a	4.1
03b	33.9
04	37.7
Total Acres: 168.3	



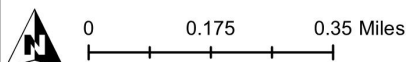
Prepared By: Alexander Richardson

Map Created: 10/23/2025

TRS: 551329

**Disclaimer:**

This is a compilation of records as they appear in the Saint Louis County Offices affecting the area shown. This drawing is to be used only for reference purposes and the County is not responsible for any inaccuracies herein contained.



Self Directed Thinning

BL

Painted Blue Line



Unpainted Boundary

UBL

Unpainted Block Line

PVT

Private

A/BI

Aspen/Birch



Wetland/Marsh

Forest Management Road

Seasonal Woods Road

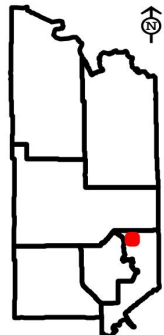
New Road Construction

Potential Alternate Access

Gate

Proposed Culvert

Cabin Leases





# St. Louis County February 26, 2026 Timber Auction

Tract #: 20

B26-551435

Sale Administrator: Anna Nixon

Pike Lake Area

Total Appraised: \$101,093.18

Twp. 55N Rge. 14W Sec. 26, 27, 34, 35

C19260020

Down Payment Required: \$15,163.98

Total Acres: 151.3

Expires: 4/15/2029

47° 12.685' N 092° 5.252' W

Blocks: 5

Species	Sticks	Dia.
Aspen	4.7	10.1
Birch	4.2	10.8
Maple-Red	3.1	10.2
Spruce-White	6.4	13.6
Balsam Fir	2.3	6.7
Balm Of Gilead	2.0	6.5

## Comments:

There is an outbreak of Spruce budworm infecting balsam fir species on this sale. Only currently live trees were cruised.

This sale is in the Emerald Ash Borer Quarantine Area.

## Access:

As seen on the sale map, Blocks 2, 3, 4, and 5 are accessed off of the Marshall Truck Trail and will require some roadwork. Block 1b is accessed off of Highway 4 and will require culvert installation and removal once timber sale is completed the berm on this block will also need to be reinstalled. Block 1a has an existing access off of the Brimson road.

Block	Operational Periods
1,2,3,4	Dry soil after June 1 or Frozen Ground

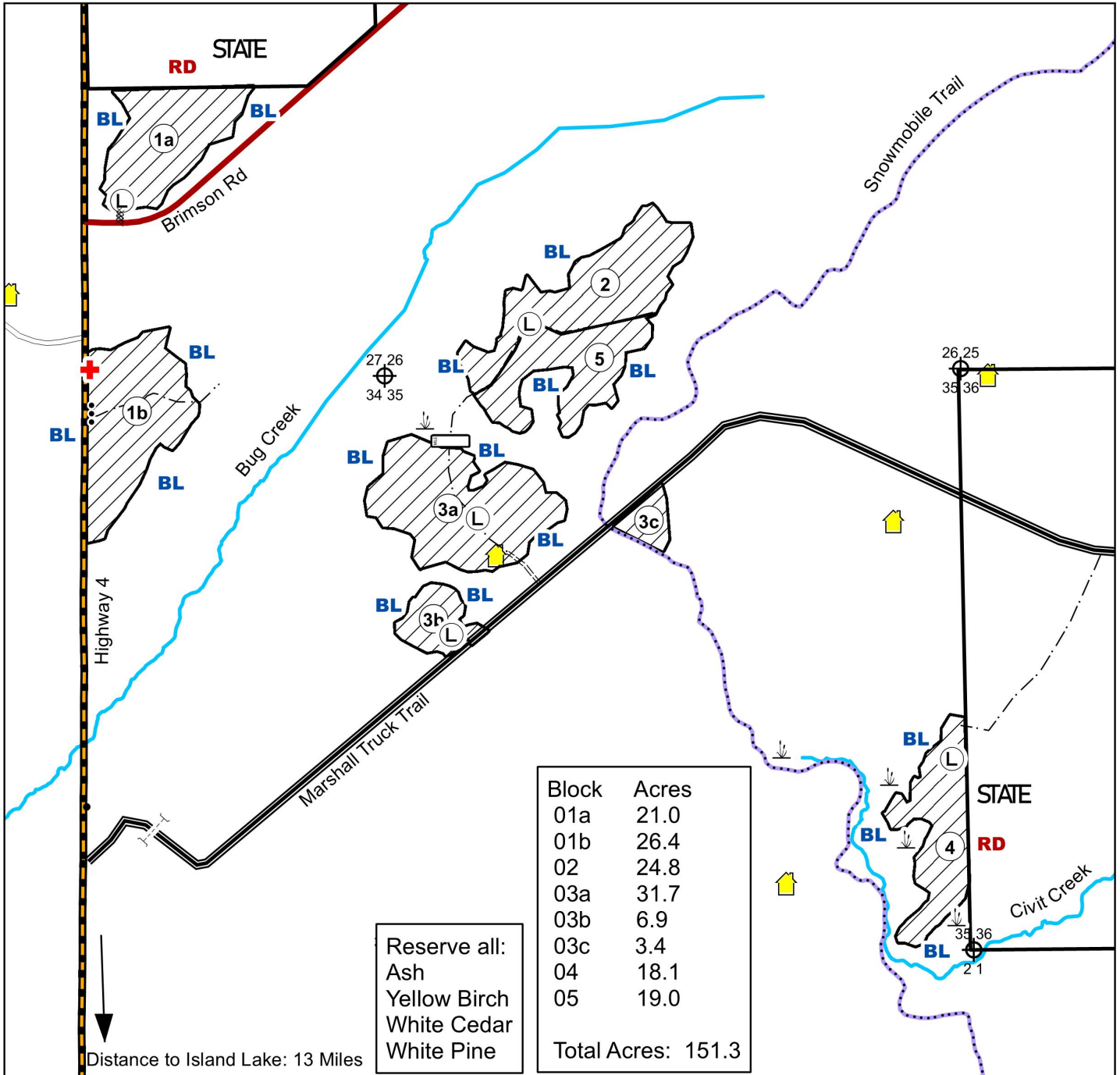
Products	No Bid	Total Volume	Appraised Value	Total Value
<b>Total for Blocks 1, 2, 3, 4, 5</b>				
Aspen		3371 Cords @	\$28.01 =	\$94,421.71
Balm Of Gilead		4 Cords @	\$28.01 =	\$112.04
Balsam Fir		58 Cords @	\$7.54 =	\$437.32
SOAV Birch		593 Cords @	\$7.01 =	\$4,156.93
SOAV Maple-Red		266 Cords @	\$5.23 =	\$1,391.18
Spruce-White		41 Cords @	\$14.00 =	\$574.00
<b>Total Appraised Value:</b>				<b>\$101,093.18</b>

Volume Per Block	Block 1	Block 2	Block 3	Block 4	Block 5
Aspen pulpwood	874	771	996	140	590
Balm Of Gilead pulpwood	2		2		
Balsam Fir pulpwood	20	2	7	27	2
Birch pulpwood	69	111	192	136	85
Maple-Red pulpwood	79	78	50		59
Spruce-White pulpwood	4		12	25	

C19260020

St. Louis County

B26-551435



Prepared By: Anna Nixon	Clearcut	Proposed Access Road	Survey Marker (protect)	
Map Created: 10/30/2025				
TRS: 551435	Cabin Leases	Section Corner	Berm	
<b>Disclaimer:</b> This is a compilation of records as they appear in the Saint Louis County Offices affecting the area shown. This drawing is to be used only for reference purposes and the County is not responsible for any inaccuracies herein contained.	Landing	Guaranteed Access		Proposed Culvert
	Painted Blue Line	Stream	Lease Access	
	Painted Red Line	Wetland or Marsh		
	Gate			
	0 0.175 0.35 Miles			



# St. Louis County February 26, 2026 Timber Auction

Tract #: 21

F26-511821

Sale Administrator: Daniel Preiner

Pike Lake Area

Total Appraised: \$55,674.10

Twp. 51N Rge. 18W Sec. 21

C19260021

Down Payment Required: \$8,351.12

Total Acres: 120.3

Expires: 4/15/2029

46° 53.45' N 092° 37.613' W

Blocks: 4

Species	Sticks	Dia.
Aspen	4.0	10.3
Maple-Red	2.1	9.7

**Comments:**

Operations on this sale will be required to use GPS technology to determine the location of unpainted boundaries. See harvest provisions or contact the sale administrator for details.

Block	Operational Periods
1,2,3,4	Frozen Ground

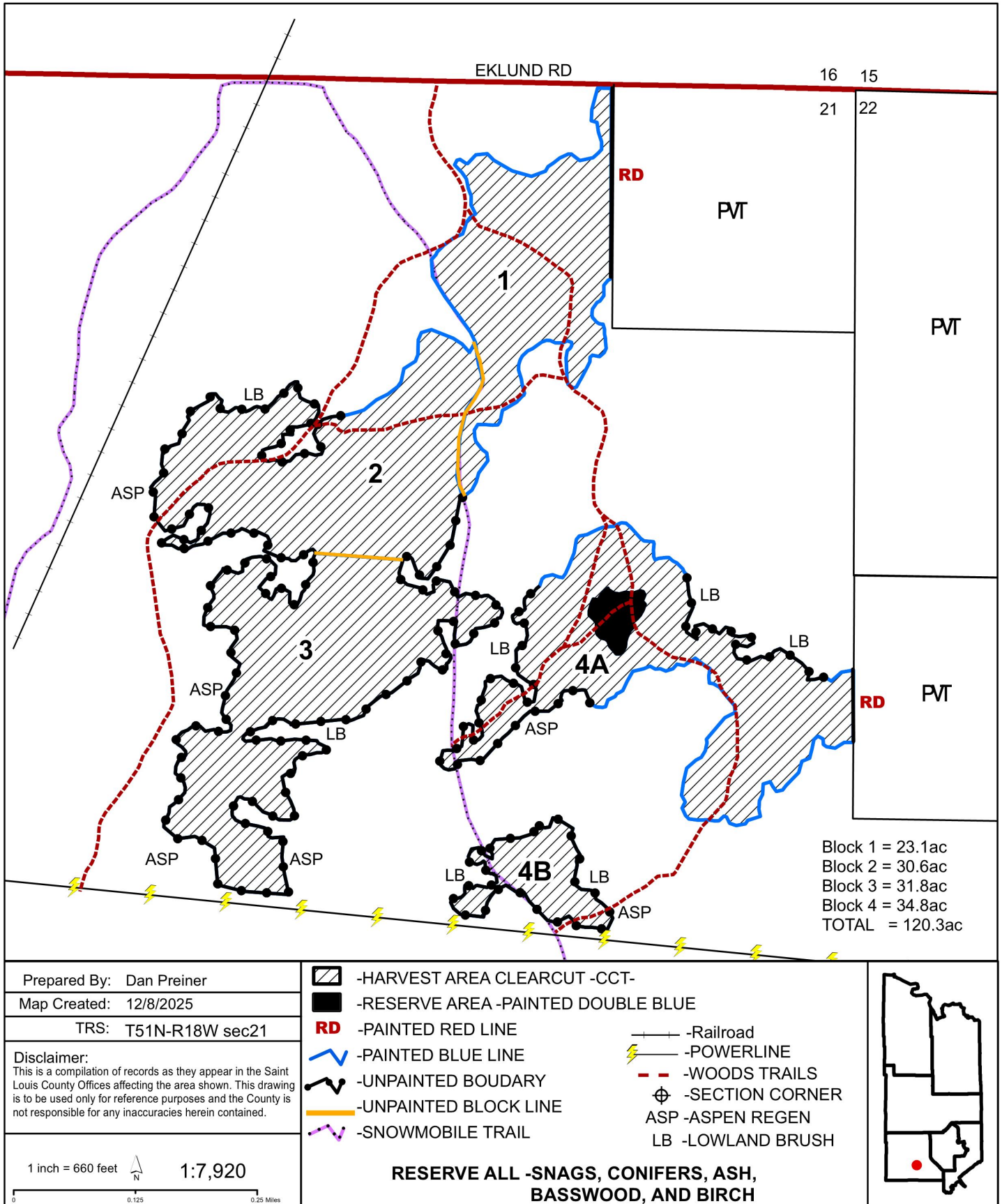
Products	No Bid	Total Volume	Appraised Value	Total Value
Total for Blocks 1, 2, 3, 4				
Aspen		1949 Cords @	\$28.01 =	\$54,591.49
SOAV Maple-Red		207 Cords @	\$5.23 =	\$1,082.61
Total Appraised Value:				\$55,674.10

Volume Per Block	Block 1	Block 2	Block 3	Block 4
Aspen pulpwood	419	555	577	398
Maple-Red pulpwood	29	39	41	98



C19260021

St Louis County  
F26-511821





# St. Louis County February 26, 2026 Timber Auction

Tract #: 22

F26-511912

Sale Administrator: John Kloster

Pike Lake Area

Total Appraised: \$28,779.76

Twp. 51N Rge. 19W Sec. 12

C19260022

Down Payment Required: \$4,316.96

46° 54.8' N 092° 41.102' W

Total Acres: 42.9

Expires: 4/15/2029

Blocks: 2

Species	Sticks	Dia.
Aspen	6.0	6.5
Mixed Maple	4.2	4.7
Birch	5.3	8.2
Ash	5.2	10.5
Basswood	3.8	8.4
Balsam Fir	6.0	11.0

## Comments:

There is a berm blocking the woods road (see sale map). The berm must be replaced at the conclusion of the timber sale to the satisfaction of the sale administrator.

See sale map. Guaranteed access is via the Battery F.M.R. It is 2.1 miles from the beginning of the Battery Rd. to the existing woods road. Then, 0.7 miles to the sale boundary on the existing woods road.

## Operational Periods:

Frozen ground

Block	Operational Periods
1,2	Frozen Ground

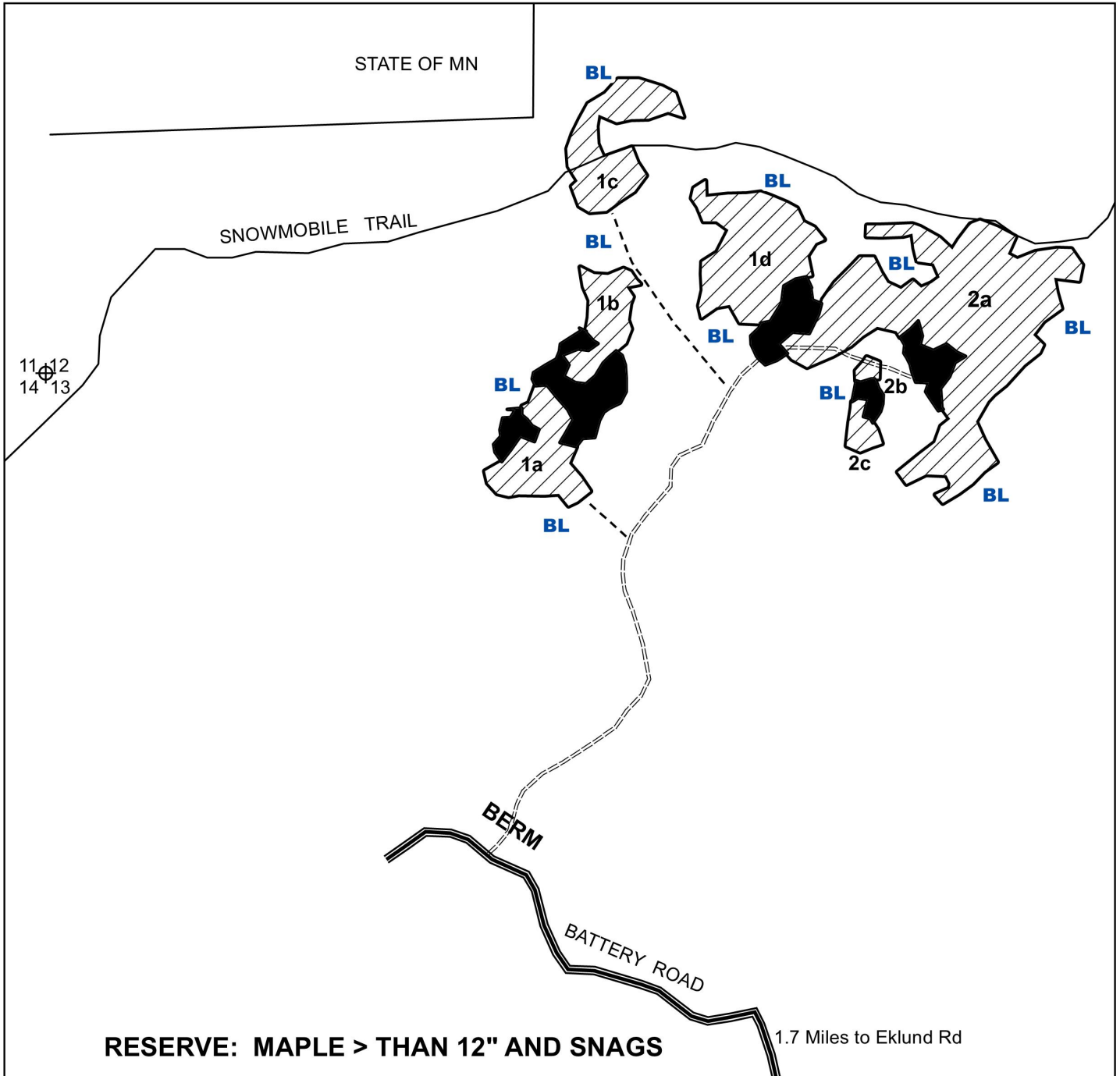
Products	No Bid	Total Volume	Appraised Value	Total Value
Total for Blocks 1, 2				
SOAV Ash		48 Cords @	\$5.50 =	\$264.00
Aspen		818 Cords @	\$30.81 =	\$25,202.58
SOAV Balsam Fir		3 Cords @	\$8.29 =	\$24.87
SOAV Basswood		9 Cords @	\$8.43 =	\$75.87
SOAV Birch		87 Cords @	\$7.72 =	\$671.64
SOAV Mixed Maple		397 Cords @	\$6.40 =	\$2,540.80
Total Appraised Value:				\$28,779.76

Volume Per Block	Block 1	Block 2
Ash pulpwood	8	40
Aspen pulpwood	361	457
Balsam Fir pulpwood		3
Basswood pulpwood	5	4
Birch pulpwood	45	42
Mixed Maple pulpwood	220	177

C19260022

St. Louis County

F26-511912



Prepared By: J. KLOSTER

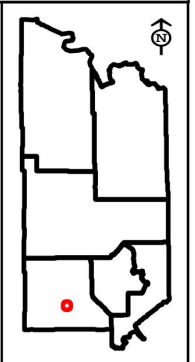
Map Created: 31 OCTOBER 2025

TRS: T51, R19, S12

Disclaimer:

This is a compilation of records as they appear in the Saint Louis County Offices affecting the area shown. This drawing is to be used only for reference purposes and the County is not responsible for any inaccuracies herein contained.

0 0.1 0.2 Miles





# St. Louis County February 26, 2026 Timber Auction

Tract #: 23

F26-511927

Sale Administrator: Steven Boberg

Pike Lake Area

Total Appraised: \$31,927.22

Twp. 51N Rge. 19W Sec. 27

C19260023

Down Payment Required: \$4,789.08

46° 52.499' N 092° 44.166' W

Total Acres: 53.8

Expires: 4/15/2029

Blocks: 2

Species	Sticks	Dia.
Aspen	4.8	9.9
Balsam Fir	2.8	7.2
Maple-Red	2.5	9.7
Birch	3.5	9.9
Balm Of Gilead	3.8	7.9

## Comments:

A minimum \$2000.00 of the downpayment will be retained and will be held until the satisfactory completion of the contract.

## Access:

Sale will be accessed through private land from the south off of McCamus Rd. Upon completion of timber sale operations, the access road(s) to the sale area must be bermed or blocked to the satisfaction of the Seller.

## Operational Periods:

Block	Operational Periods
1, 2	Dry soil after July 1 or Frozen Ground

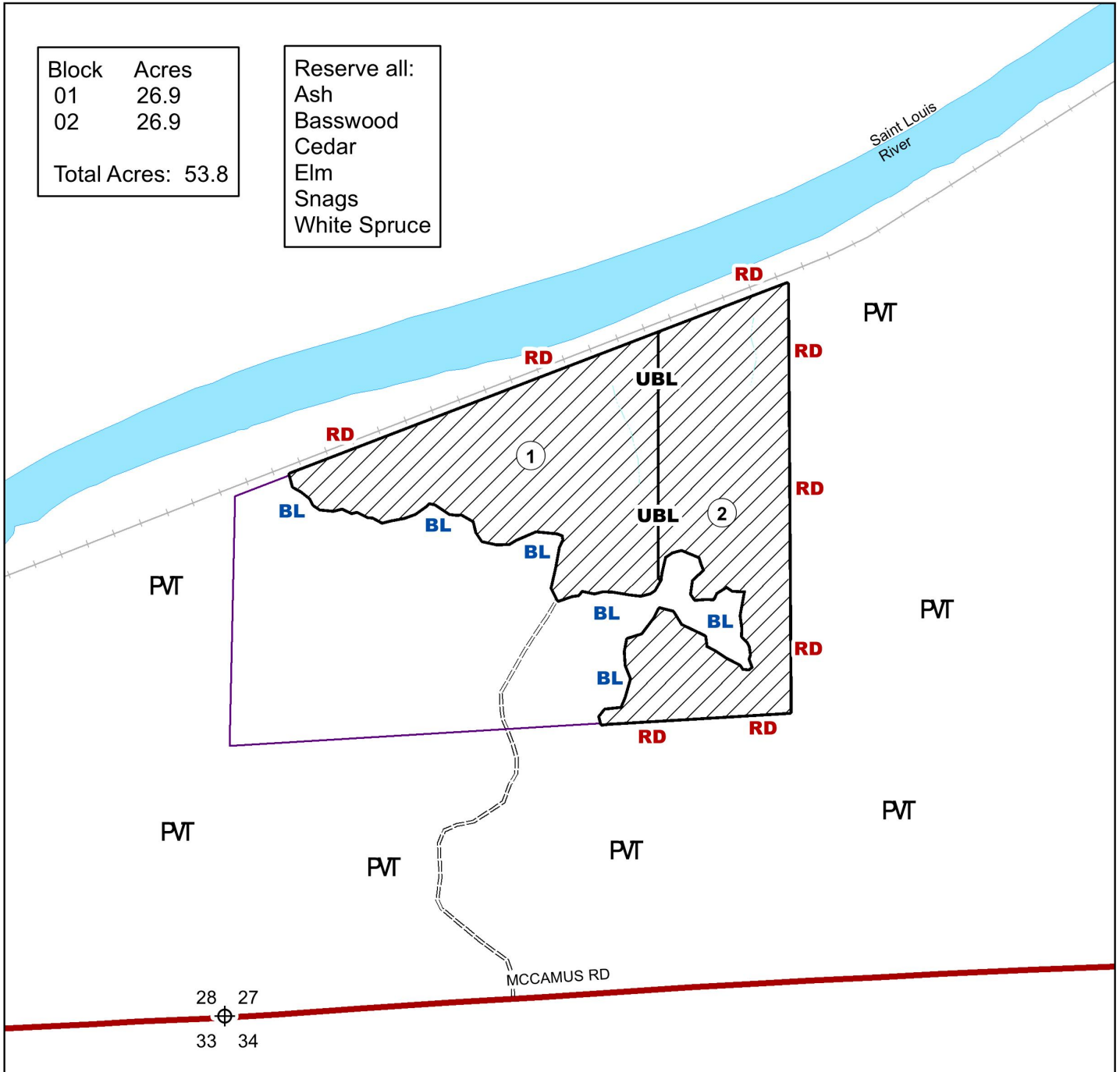
Products	No Bid	Total Volume	Appraised Value	Total Value
<b>Total for Blocks 1, 2</b>				
Aspen		1036 Cords @	\$28.01 =	\$29,018.36
Balm Of Gilead		30 Cords @	\$28.01 =	\$840.30
Balsam Fir		126 Cords @	\$7.54 =	\$950.04
SOAV Birch		76 Cords @	\$7.01 =	\$532.76
SOAV Maple-Red		112 Cords @	\$5.23 =	\$585.76
<b>Total Appraised Value:</b>				<b>\$31,927.22</b>

Volume Per Block	Block 1	Block 2
Aspen pulpwood	518	518
Balm Of Gilead pulpwood	15	15
Balsam Fir pulpwood	63	63
Birch pulpwood	38	38
Maple-Red pulpwood	56	56

C19260023

St. Louis County

F26-511927



Prepared By: Steven Boberg

Map Created: 11/13/2025

TRS: 511927

Disclaimer:

This is a compilation of records as they appear in the Saint Louis County Offices affecting the area shown. This drawing is to be used only for reference purposes and the County is not responsible for any inaccuracies herein contained.

Clearcut

Painted Blue Line

Painted Red Line

Existing private woods roads

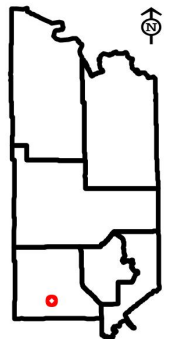
BNSF Railroad

Private

Section Corner

Unpainted Block Line

Intermittent Stream





# St. Louis County February 26, 2026 Timber Auction

Tract #: 24

K26-511605

Sale Administrator: Erik Anton

Pike Lake Area

Total Appraised: \$23,910.73

Twp. 51N Rge. 16W Sec. 5, 6

C19260024

Down Payment Required: \$3,586.61

Total Acres: 43.7

Expires: 4/15/2029

46° 55.755' N 092° 24.356' W

Blocks: 3

Species	Sticks	Dia.
Aspen	4.2	10.3
Balsam Fir	2.5	8.5
Maple-Red	2.4	10.5
Balm Of Gilead	3.1	10.2
Spruce-White	6.3	16.8
Maple-Sugar	2.5	12.5

## Comments:

Roundwood chipping of scaled species will be allowed if scaling requirements are met.

This sale is in the Emerald Ash Borer Quarantine Area.

## Access:

Sale access will be off the Hwy. 8 Grade Forest Management Road. Blocks 2 and 3 will be accessed from the powerline right of way, landings will be pushed in perpendicular to the Powerline right of way into the sale area. Block 1 will require at least 1 culvert installation; gravel can be sourced within the sale area or from a nearby authorized gravel pit.

## Operational Periods:

Block	Operational Periods
1,2,3	Dry soil after June 1 or Frozen Ground

Products	No Bid	Total Volume	Appraised Value	Total Value
Total for Blocks 1, 2, 3				
Aspen		818 Cords @	\$28.01 =	\$22,912.18
Balm Of Gilead		19 Cords @	\$28.01 =	\$532.19
Balsam Fir		24 Cords @	\$7.54 =	\$180.96
SOAV Birch		3 Cords @	\$7.01 =	\$21.03
SOAV Maple-Red		21 Cords @	\$5.23 =	\$109.83
SOAV Maple-Sugar		2 Cords @	\$7.27 =	\$14.54
SOAV Spruce-White		10 Cords @	\$14.00 =	\$140.00
Total Appraised Value:				\$23,910.73

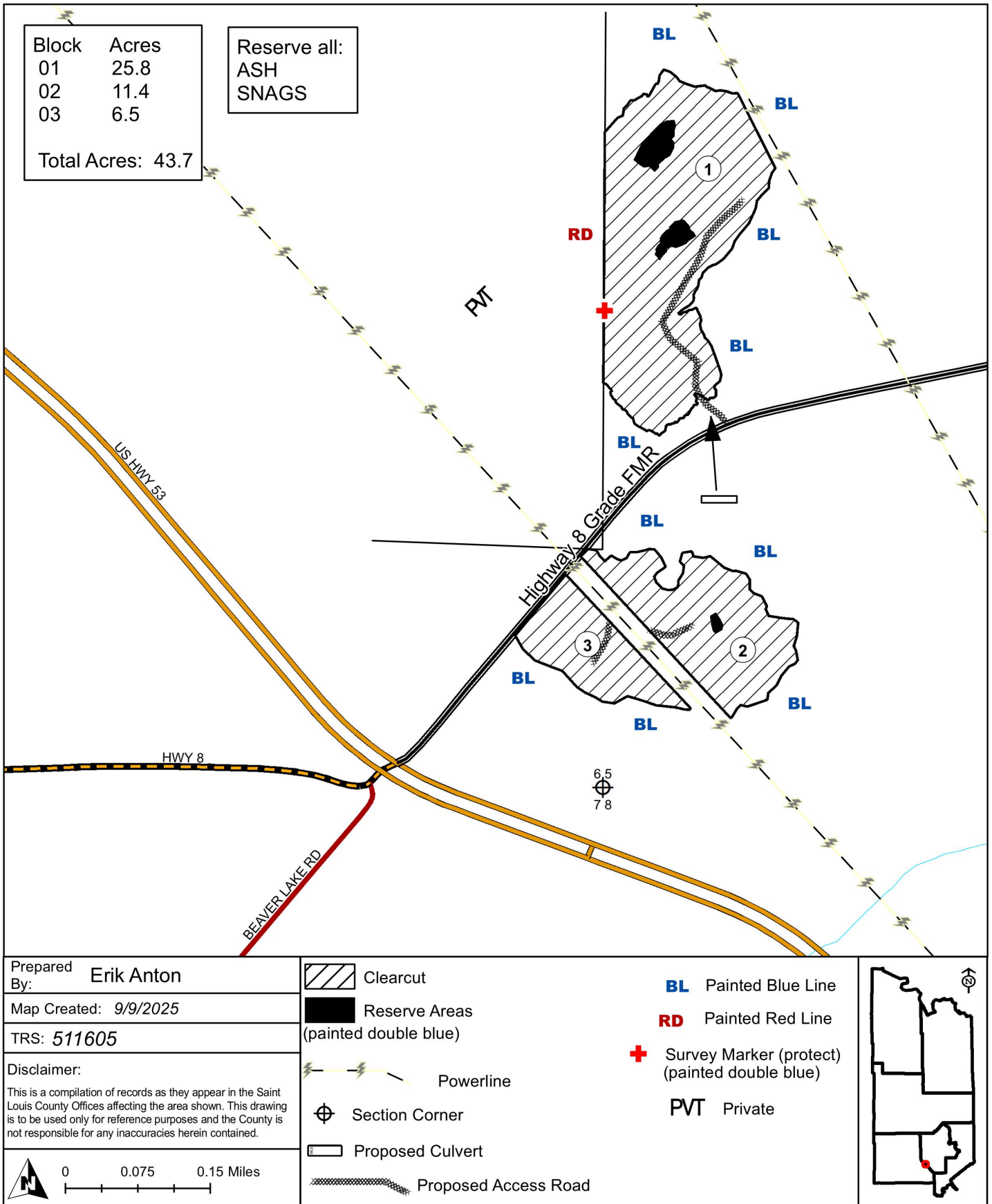
Volume Per Block	Block 1	Block 2	Block 3
Aspen pulpwood	497	185	136
Balm Of Gilead pulpwood	19		
Balsam Fir pulpwood	4	14	6
Birch pulpwood	3		
Maple-Red pulpwood	13	4	4
Maple-Sugar pulpwood			2
Spruce-White pulpwood	8		2



C19260024

St. Louis County

K26-511605





# St. Louis County February 26, 2026 Timber Auction

Tract #: 25

K26-531425

Sale Administrator: Erik Anton

Pike Lake Area

Total Appraised: \$25,174.63

Twp. 53N Rge. 14W Sec. 25, 36

C19260025

Down Payment Required: \$3,776.19

Total Acres: 43

Expires: 4/15/2029

47° 2.39' N 092° 3.665' W

Blocks: 2

Species	Sticks	Dia.
Aspen	5.2	10.7
Maple-Sugar	3.3	8.7
Birch	3.1	11.3
Maple-Red	2.8	12.0
Balsam Fir	3.0	8.5
Spruce-White	4.5	11.5

## Comments:

The purchaser has the option to purchase this sale as advertised or to purchase all species as Sold On Appraised Volume (SOAV). Optional Products will be included with the SOAV option if advertised.

Roundwood chipping of scaled species will be allowed if scaling requirements are met.

This sale is in the Emerald Ash Borer Quarantine Area.

Berm installation required after sale completion, berm will be installed to the satisfaction of seller.

## Access:

Sale blocks will be accessed using a pre-existing road off the Cannonball Lake Forest Management Road. An extra spur can be constructed to minimize skidding distance.

Block	Operational Periods
1	Dry soil after June 1 or Frozen Ground
2	Dry soil after July 1 or Frozen Ground

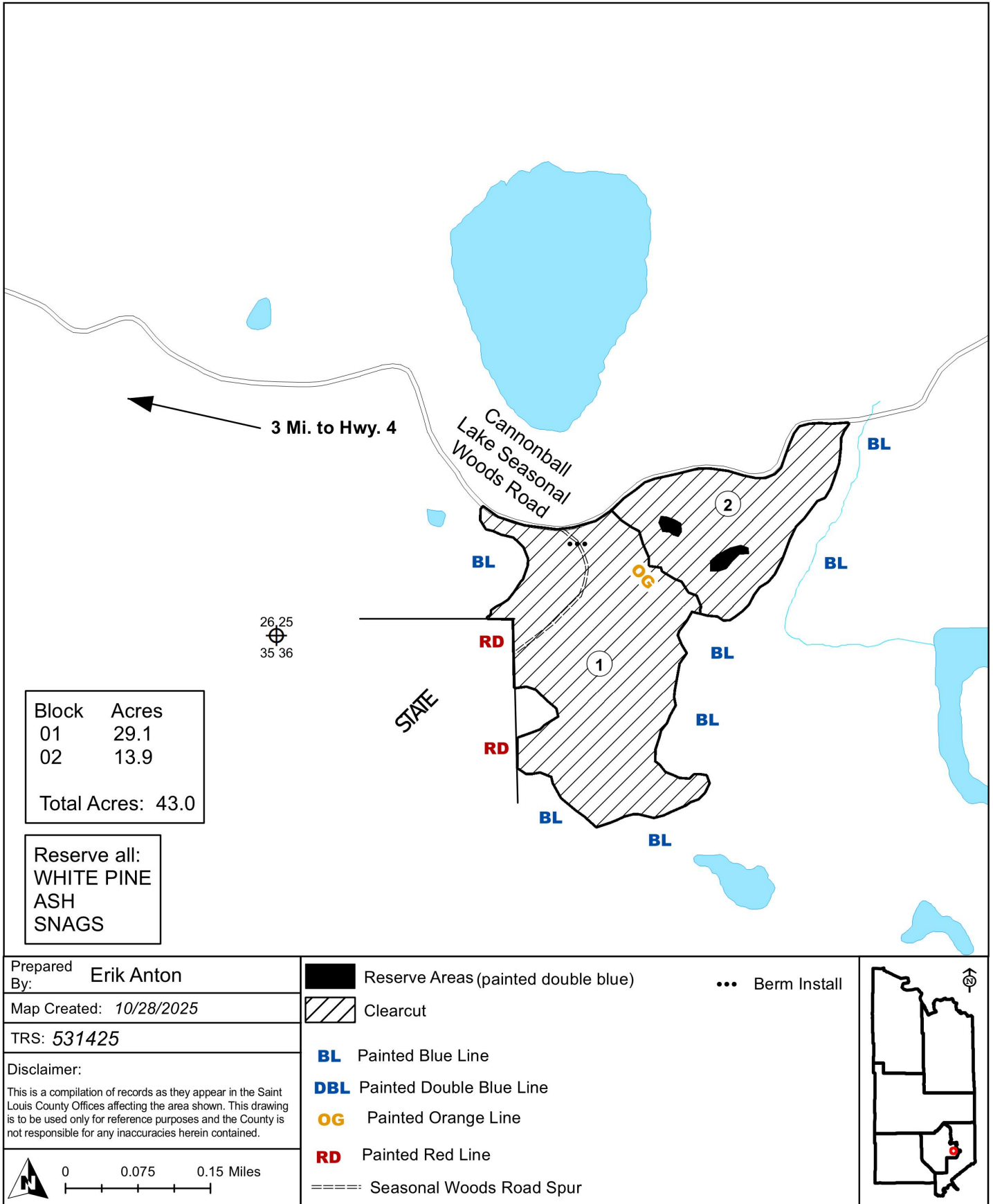
Products	No Bid	Total Volume	Appraised Value	Total Value
Total for Blocks 1, 2				
Aspen		770 Cords @	\$30.81 =	\$23,723.70
SOAV Balsam Fir		6 Cords @	\$8.29 =	\$49.74
SOAV Birch		37 Cords @	\$7.72 =	\$285.64
SOAV Maple-Red		25 Cords @	\$5.75 =	\$143.75
SOAV Maple-Sugar		108 Cords @	\$8.00 =	\$864.00
SOAV Spruce-White		7 Cords @	\$15.40 =	\$107.80
Total Appraised Value:				\$25,174.63

Volume Per Block	Block 1	Block 2
Aspen pulpwood	350	420
Balsam Fir pulpwood	3	3
Birch pulpwood	30	7
Maple-Red pulpwood	12	13
Maple-Sugar pulpwood	90	18
Spruce-White pulpwood	7	

C19260025

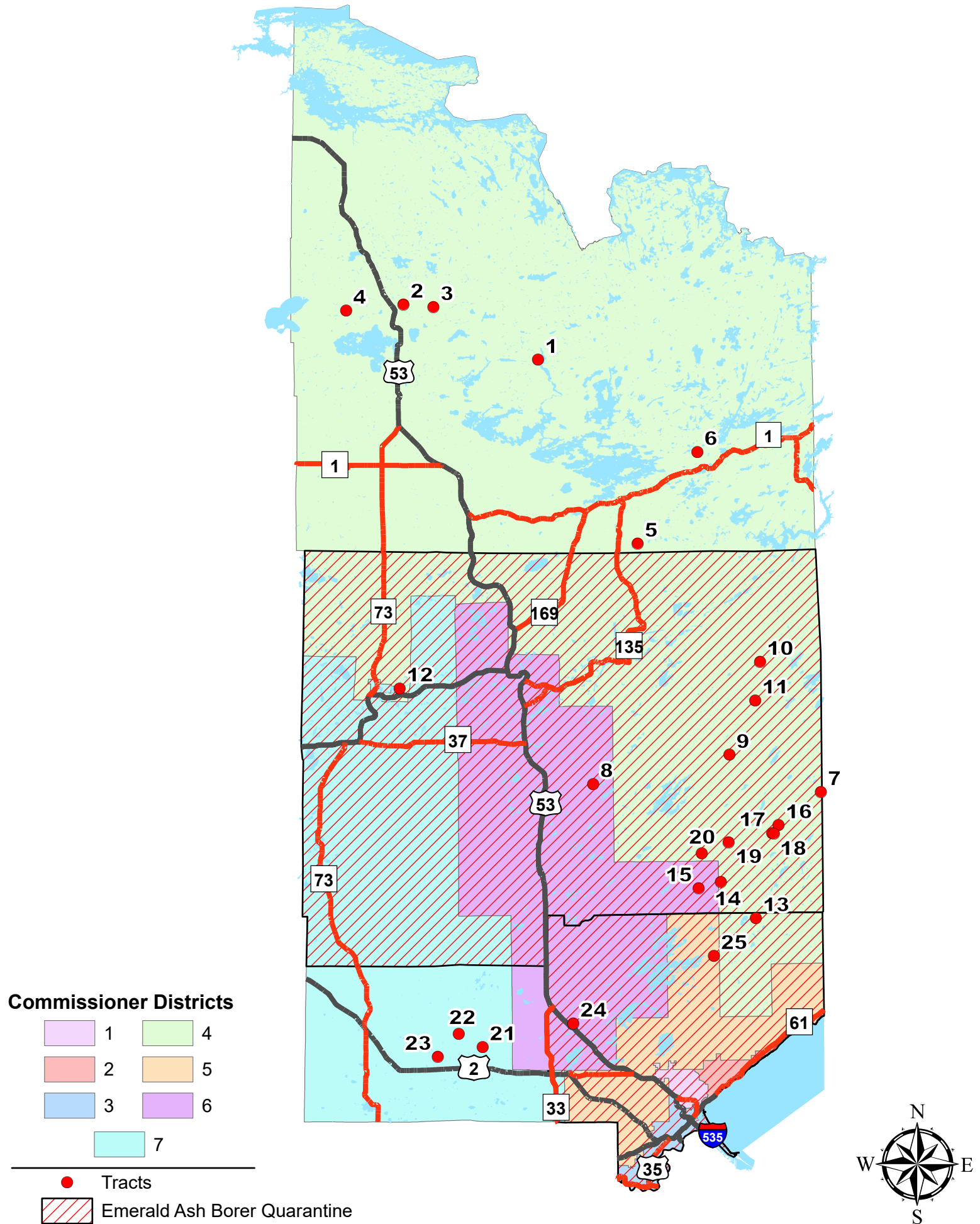
St. Louis County

K26-531425



This page intentionally left blank.

# Tract Locations







S A I N T  
**LOUIS**  
**COUNTY**  
M I N N E S O T A

# Land and Minerals Department

## Sealed Bid Timber Auction



Photo Credit: Anna Nixon

**February 26, 2026 9:30 a.m.**

**Barrier Free:** All St. Louis County Timber Auctions are accessible to people with disabilities. Attempts will be made to accommodate any other individual needs for special services. Contact the St. Louis County Land and Minerals Department (218-726-2606) prior to the auction, so necessary arrangements can be made.