



iOS MOBILE LAND EXPLORER

St. Louis County, Minnesota



A Mobile Property and Land Explorer using Apple Products

APPLE
iOS

Louis County land record data using your iOS smart phone or tablet. This application is also available for Android operating systems.

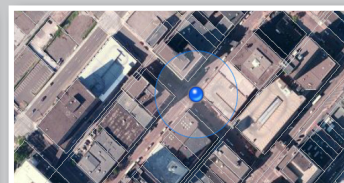
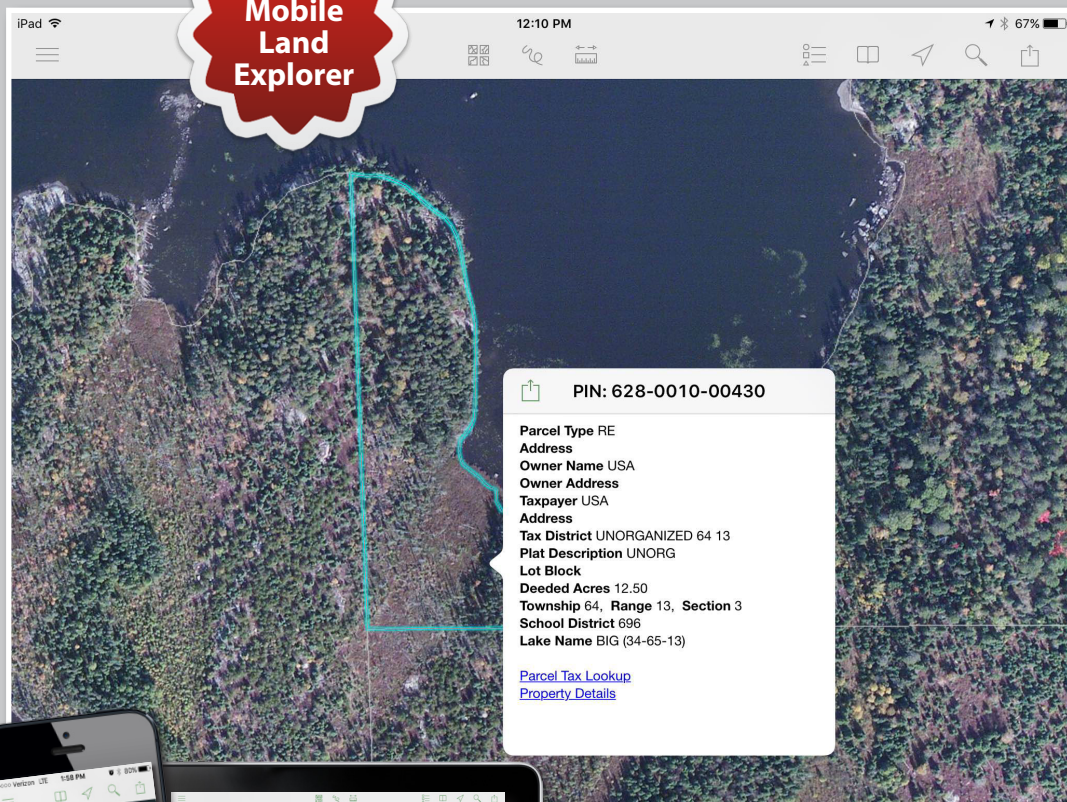
Audience: The Mobile Land Explorer will benefit a variety of mobile users such as: general public, real estate agents, appraisers, surveyors, engineers, insurance adjusters, title companies, developers, non-profits, universities, and our government partners who need land record data to conduct business.

Our Commitment: St. Louis County is committed to continuously improving the web mapping application performance, functionality, and data content to provide “Value” to our businesses, partners, and public.

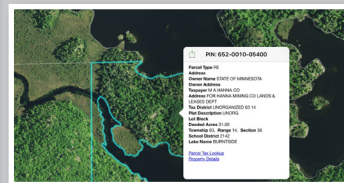
MOBILE DEVICE AVAILABILITY

Operating System	Devices
iOS (Apple)	iphone, ipad, ipod

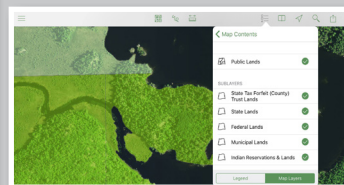
iOS
Mobile
Land
Explorer



Location Services: Built in location services to find you.



Parcel Details: Get basic parcel details by tapping parcel.



Data: Turn on/off additional data by checking layers.



Devices: Use the device that you have. Instructions on how to download the app from the mobile store is on the next page. Its Free!

***Data Plan:** Be sure to know your data plan. These apps consume lots of data. Unlimited data plans generally do not need to worry about data usage. Know your plan before you use this app.





iOS (Apple) St. Louis County Mobile Land Explorer is available for iOS users and lets you take County data from the office into the field. It includes an application for Apple's iPhone, iPod touch, and iPad devices that you can download from the Apple's "App Store" for free.

iPAD

DOWNLOAD APP

Step 1: Open App Store

Step 2: Search "Explorer for ArcGIS" by Esri and download

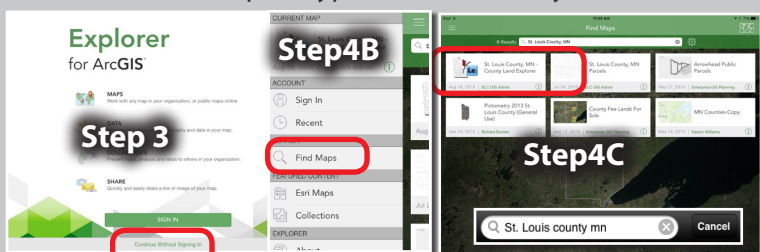


VIEW COUNTY DATA

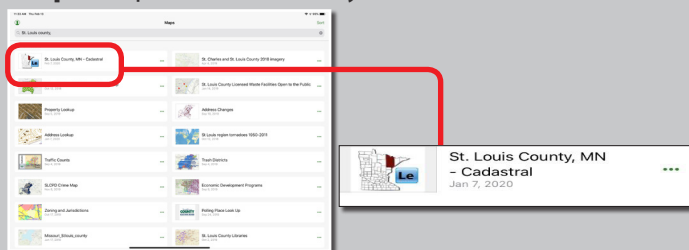
Step 3: Open "Explorer for ArcGIS" App

You may "Continue without signing in".

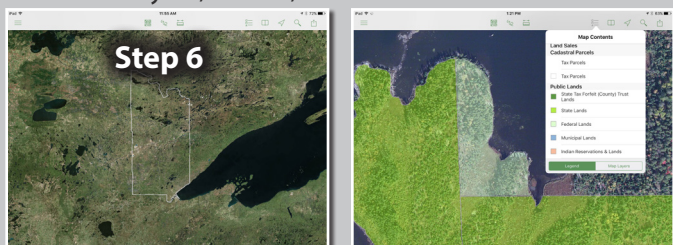
Step 4: A. Tap Menu Icon B. Tap "Find Maps" to search for a map. C. Type "St Louis County, MN" and search



Step 5: Tap "St. Louis County, MN - Cadastral"



Step 6: Ready to use. Pan/Zoom the map with your fingertips. Tap parcels to get land info. Tap icons to select bookmarks, locate your GPS position, search addresses, share maps, change basemaps, view legend items, turn on/off data layers, sketch, and measure.

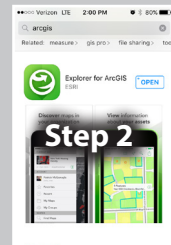


IPHONE

DOWNLOAD APP

Step 1: Open App Store

Step 2: Search "Explorer for ArcGIS" by Esri and download

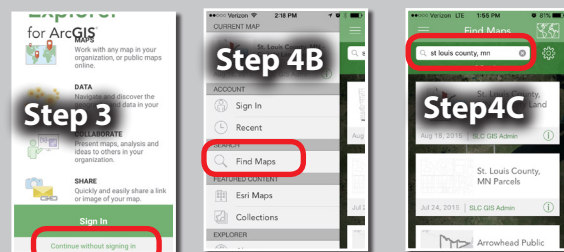


VIEW COUNTY DATA

Step 3: Open "Explorer for ArcGIS" App

You may "Continue without signing in".

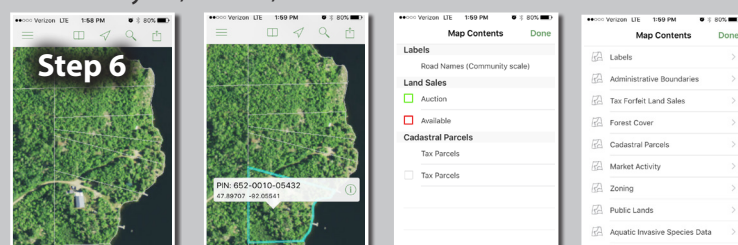
Step 4: A. Tap Menu Icon B. Tap "Find Maps" to search for a map. C. Type "St Louis County, MN" and search



Step 5: Tap "St. Louis County, MN - Cadastral"



Step 6: Ready to use. Pan/Zoom the map with your fingertips. Tap parcels to get land info. Tap icons to select bookmarks, locate your GPS position, search addresses, share maps, change basemaps, view legend items, turn on/off data layers, sketch, and measure.



***Data Plan:** Be sure to know your data plan. These apps consume lots of data. Unlimited data plans generally do not need to worry about data usage. Know your plan before you use this app.

