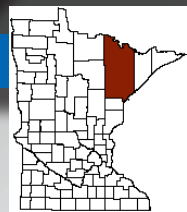




# Android MOBILE LAND EXPLORER

## St. Louis County, Minnesota



A Mobile Property and Land Explorer using Android

ANDROID

**About:** The Mobile Land Explorer is an interactive web mapping application using ArcGIS Online to view and map St. Louis County land record data using your Android smart phone or tablet. This application is also available for iOS operating systems.

**Audience:** The Mobile Land Explorer will benefit a variety of mobile users such as: general public, real estate agents, appraisers, surveyors, engineers, insurance adjusters, title companies, developers, non-profits, universities, and our government partners who need land record data to conduct business.

**Our Commitment:** St. Louis County is committed to continuously improving the web mapping application performance, functionality, and data content to provide **"Value"** to our businesses, partners, and public.

### MOBILE DEVICE AVAILABILITY

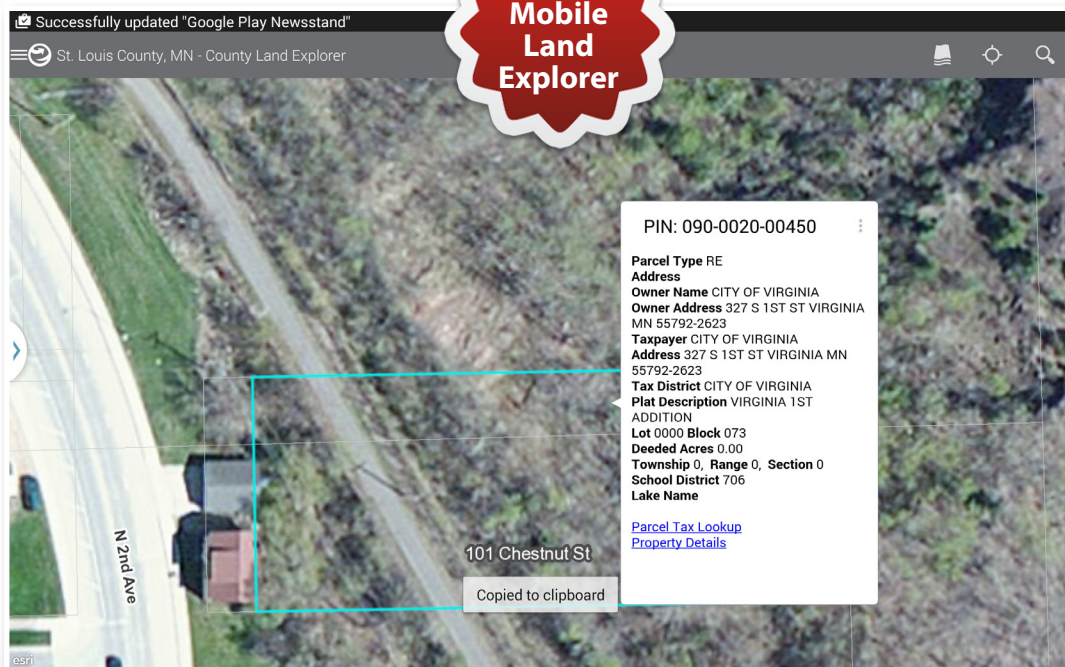
#### Operating System

Android (Google)

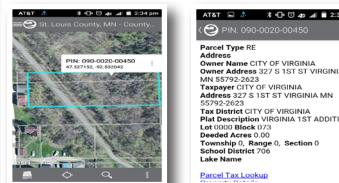
#### Devices

Most Android Devices

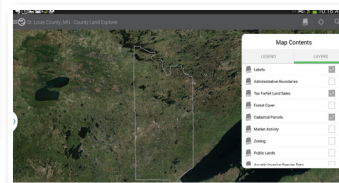
### Android Mobile Land Explorer



**Location Services:** Built in location services to find you.



**Parcel Details:** Get basic parcel details by tapping parcel.



**Data:** Turn on/off additional data by clicking on check box.



Phone

Tablet

**Devices:** Use the device that you have. Instructions on how to download the app from the mobile store is on the next page. Its Free!

**\*Data Plan:** Be sure to know your data plan. These apps consume lots of data. Unlimited data plans generally do not need to worry about data usage. Know your plan before you use this app.

### Contact

St. Louis County, Minnesota  
Planning and Community Development Department  
218-725-5000





## Android (Google Software)

St. Louis County Mobile Land Explorer is available for Android users and lets you take County data from the office into the field. It includes an application for mobile tablets and phones that use Google's Android operating system and can be downloaded from the "Google Play Store" for free.

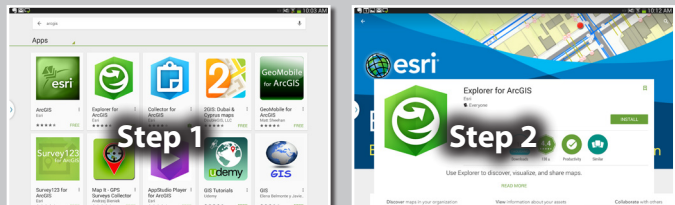
### TABLETS

#### DOWNLOAD APP

**Step 1:** Open Google Play Store



**Step 2:** Search "Explorer for ArcGIS" by Esri and download



#### VIEW COUNTY DATA

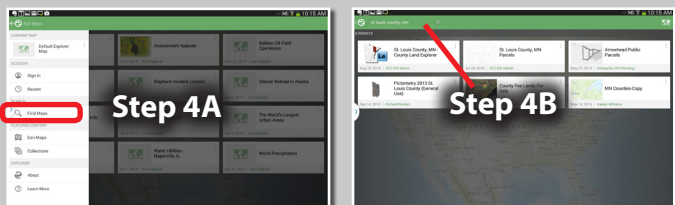
**Step 3:** Install/Open "Explorer for ArcGIS" App



You may "Continue without signing in".



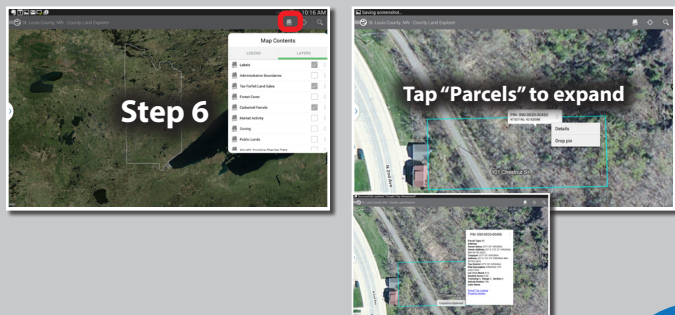
**Step 4:** A. Tap magnifier "Find Maps" to search a map  
B. Type "St Louis County MN" and search



**Step 5:** Tap "St. Louis County, MN - Cadastral"



**Step 6:** Ready to use. See Layers icon for content, legend, and details. Turn on/off data with checkbox.



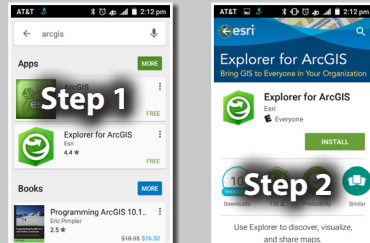
### PHONES

#### DOWNLOAD APP

**Step 1:** Open Google Play Store



**Step 2:** Search "Explorer for ArcGIS" by Esri and download

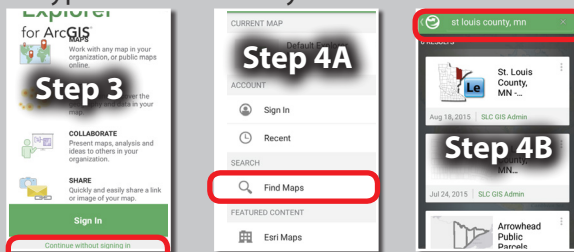


#### VIEW COUNTY DATA

**Step 3:** Install/Open "ArcGIS" App



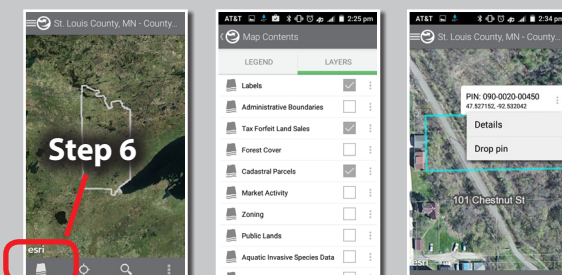
**Step 4:** A. Tap magnifier to search a map.  
B. Type "St Louis County MN" and search



**Step 5:** Tap "St. Louis County, MN - Cadastral"



**Step 6:** Ready to use. See Layers icon for content, legend, and details. Turn on/off data with checkbox.



**\*Data Plan:** Be sure to know your data plan. These apps consume lots of data. Unlimited data plans generally do not need to worry about data usage. Know your plan before you use this app.

