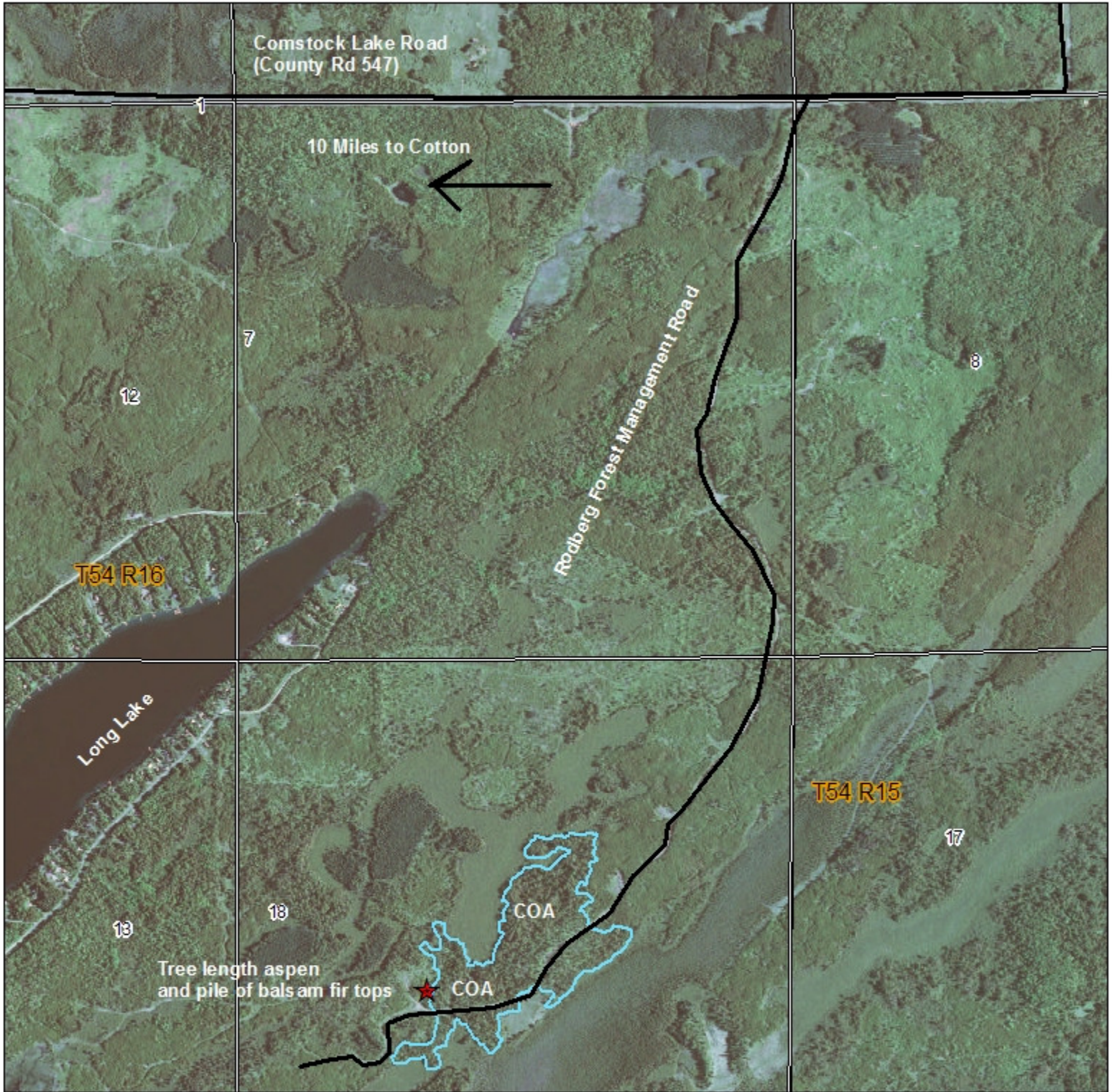


# St. Louis County Firewood at the Lost Garman Site



Prepared By: Steven Boberg

Map Created: Jan 23, 2012

TRS: T 54 R15 Section 10

**Disclaimer:**

This is a compilation of records as they appear in the Saint Louis County Offices affecting the area shown. This drawing is to be used only for reference purposes and the County is not responsible for any inaccuracies herein contained.

Cut over area (recently harvested) = COA

approximate location of firewood  
(UTM coordinates 553455, 5223188) ★

Rodberg Road is not plowed

1 in = 0.25 miles



0 0.4 Miles

